

Annual Report

2024



CELEBRATING FORTY YEARS OF IMPACT

HONORHEALTH®

Foundation



LOOKING FORWARD

Accelerating the future of healthcare thanks to you

As we navigate the ever-evolving landscape of healthcare, we're witnessing a remarkable shift in the way philanthropy plays a role in shaping the future of medicine. Healthcare fundraising is no longer about supporting a single cause; it's about creating bold, transformative solutions that have the power to change lives on a national and global scale.

We are fortunate to be at the intersection of progress and possibility, and it is donors like YOU who are driving this change. Your vision, generosity and leadership are fueling progress that reaches beyond today's healthcare system and lays the foundation for a healthier future.

TO HONOR 40 YEARS OF IMPACT,
WE ARE PLEASED TO PRESENT 40 WAYS
YOUR SUPPORT HAS MADE A DIFFERENCE
IN 2024 AND BEYOND.

OUR VISION

To set the standard for excellence
in relationship fundraising through
philanthropy

OUR MISSION

To strengthen the mission of
HonorHealth through philanthropy



When my wife Susan and I moved to Scottsdale from the Chicago area in 2013, we found a wonderful community of friends who were committed to making the community a better place to live. Many of those friends were supporters of HonorHealth Foundation and were making an incredible difference in the Foundation's success. We were happy to get involved.

Like many of our Trustees who had their own defining experience at HonorHealth, my own interactions with HonorHealth inspired me to become more involved and more committed to ensuring exceptional healthcare continues to grow. I was honored to join the Board in 2021 and was named Chair of the Board of Trustees for 2024-26.

One of the most exciting things for me is to see the profound impact of our Board's leadership in action. They each leverage their diverse experiences and talents to drive success in the Foundation's mission. In fact, last year the Foundation was once again named a Top Performer by the Association for Healthcare Philanthropy (ahp.org), the only Arizona hospital foundation to make the list. This honor recognizes fundraising proficiency across dozens of best-practice metrics.

On behalf of the entire Board, I thank you for your impact over the last year, and for some of you, across many of our 40 years. Thank you for embracing our commitment to finding cures, saving lives and transforming healthcare.

Carter Emerson

Carter Emerson

Chair, Board of Trustees, HonorHealth Foundation



As we close the Foundation's 40th anniversary year, I reflect on the remarkable progress HonorHealth has made across these four decades. Progress that was only possible through the unwavering support of so many generous donors.

When HonorHealth Foundation was established in 1984, "Scottsdale Memorial North" was just opening in the growing North Scottsdale area, joining "Osborn." Today, HonorHealth is a respected nine-hospital system that boasts a Research Institute and Transformation Center that will help lead us into our next 40 years!

What's even more remarkable is that people like you recognized the need for access to exceptional healthcare and gave generously to build critical programs, acquire new technology, train the next generation of clinical talent and improve access to life-saving care. Your philanthropy fortified our capabilities and fueled strategic growth.

How many people are alive today because you put caring into action? We may not be able to count them all, but we have met many of these patients and have seen the tangible impact you have made on their lives. Perhaps even you or someone you love is part of the count?

We are deeply grateful for your commitment and partnership. On behalf of our Board, staff and entire hospital community, thank you for being a vital part of our mission.

With gratitude,

Jared A. Langkilde, MBA, CFRE
President & CEO

2024 - 25

Board of Trustees

OFFICERS

Carter Emerson, *Chair*

Nancy Robertson, *Vice Chair*

Sue Fletcher, *Secretary*

James E. Graber, *Treasurer*

Laurie A. Florkiewicz
Immediate Past Chair

Sally Tryhus
Chair, Investment Committee

Scott Schirmer
Chair, Real Estate Committee

Alison McAdam
Chair, Nominating & Governance Committee

Rodney Glassman
Chair, Audit & Finance Committee

BOARD OF TRUSTEES

Curt R. Feuer

E. K. Gaylord II

Jamie Hebets

Tracey Hemstreet

Lang Herndon

Kirk Johansen

C. Dennis Knight

Robert J. Lavinia

Sharron Lewis

John C. Lucking

Murray Manaster

Suzanne Morris

Shaheen Neil

Michael G. Nicholas

Stephen J. O'Neill

Rex Porter

Richard G. Russell

Jeffrey G. Schlein

Barbara Steiner

Robert H. Tomlinson

James Tuton

David Watson

Judith G. Wolf, PhD

Louise Zirretta

Todd LaPorte
*CEO, HonorHealth,
ex officio Trustee*

Michael D. Greenbaum
Trustee for Life

Virginia G. Piper
Legacy Trustee

1

HONORHEALTH CANCER CARE

Mary's story

Mary almost skipped her annual mammogram appointment in April of 2022 because, like so many people, she had a busy work schedule that day. The only reason she went was that she happened to have another appointment nearby.

The next day, she received a call at 5:20 PM.

"It wasn't from my doctor," Mary recalls. "It was from the imaging facility. I remember thinking, if it was bad, it would be my doctor. And I also thought no one would be calling me after hours with bad news. I was wrong. It was my radiologist. She simply stated, 'You have invasive breast cancer.'"



SCAN QR CODE

**Read the rest of
Mary's story online**





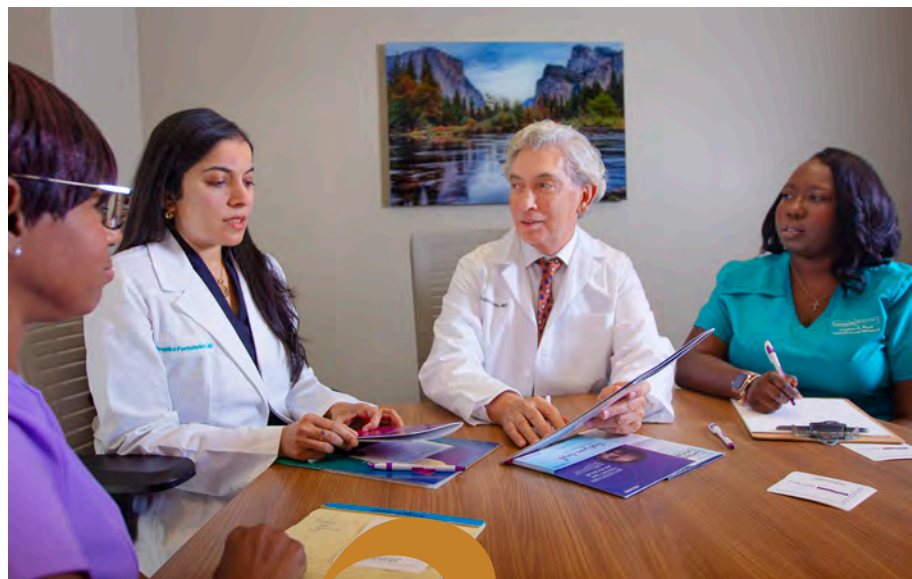
GROWING TO MEET THE NEED

*More patients
need us, so
we're doing
more*

Breast cancer is the most common cancer among American women and more patients seek care at HonorHealth every year.

Your gifts have launched an expansion of HonorHealth Cancer Care, bringing the breast health team together under one roof ... because clinical collaboration improves outcomes!

In 2024, HonorHealth launched a renovation and expansion at the Virginia G. Piper Cancer Center to transform the patient experience by consolidating women's health services. This improves the care experience for both patients and the care team.



Fast Facts

HonorHealth was the **1ST COMPREHENSIVE CANCER CENTER** established in the Valley

45% OF ALL CANCER PATIENTS in the Valley receive at least part of their treatment at HonorHealth

EVERY 2 MINUTES, a woman in the US is diagnosed with breast cancer

HonorHealth sees **38% OF BREAST CANCER SURGERY PATIENTS** in metro Phoenix, more than any healthcare system in Arizona

The oncology team meets regularly for Tumor Board, an interdisciplinary case conference to discuss diagnosis and treatment options, based on the individual patient's needs and preferences. The collective knowledge of these experts leads to a more effective plan of care.



NURSE NAVIGATORS

Special guides for your cancer journey

Cancer is scary. You've stepped into new world where everything is unfamiliar, and you have so many questions. You need a guide.

HonorHealth's team of compassionate navigators will walk beside you to answer your questions, provide information, track your progress and secure resources.

Nurse Navigators provide chemo education and work with the rest of your care team to ensure your experience is seamless across the full continuum of care. Patient Navigators help address any concerns that might prevent you from getting the care you need.

This team-based approach is a difference you'll notice at HonorHealth Cancer Care.

*Your gifts to
HonorHealth
Cancer Care
give our
patients
strength for
their fight!*

5

HONORHEALTH RESEARCH INSTITUTE

*One goal:
To improve, extend and save lives*





6

Supporters of the Research Institute gathered last May to meet the physician scientists and learn more about how their work is driving innovation, novel drug discoveries, new treatments and unprecedented patient care.



SCAN QR CODE
Watch Highways
to Healing –
Carrie's story

Fast Facts

Through the generosity of our philanthropic community, HonorHealth Research Institute's renowned physician-scientists provide new hope to patients with rare, recurring or difficult to treat conditions.

Accelerating early
**BREAKTHROUGH
INNOVATIONS**

DEVELOPING STRATEGIES
to prevent the occurrence of
secondary diseases

Expanding access to **CLINICAL
TRIALS** for patients locally and
around the globe

Establishing a **TRANSLATIONAL
LAB** to take research from the
bench to bedside more rapidly

Adopting **GENETIC TESTING**
to support early interventions

7

ROSIE'S JOURNEY

Clinical trial provides the seed of hope

When Rosie's tumor returned for the third time, she nearly lost hope.

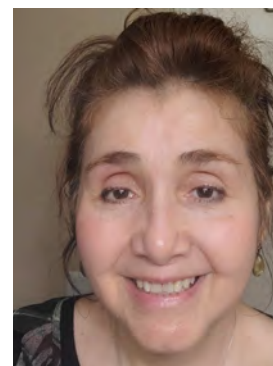
Her liposarcoma was first diagnosed in 2017. Since then, she had endured two surgeries and multiple rounds of radiation treatment. When it continued to come back, she lost the ability to care for herself. Surgeons had to remove her gallbladder and one of her kidneys to get to the 30-lb. tumor.

And now it was back.

Rosie has already been through so much. But a small seed of hope flickered within her when she learned about the option for a clinical trial at HonorHealth Research Institute.

Under the care of Dr. Michael S. Gordon, chief medical officer at the Institute, Rosie participated in the Agenus trial. As her tumor began to shrink, she gained mobility and independence again.

"I recommend HonorHealth Research Institute to everyone," Rosie says. "If you are looking for a last hope, you might find it here."



8

HONORHEALTH HEART CARE

*Community Support driving
true innovations in heart care*





This year, following a four-year “Now is the Time” fundraising campaign, HonorHealth’s new cardiovascular center of excellence opened this spring at the Scottsdale Shea Medical Center. Now, thanks to the support of hundreds of former patients and community members, there is a new home for HonorHealth’s exceptional team and their innovations that are changing the future of cardiac care.

COLLABORATION WITH HONORHEALTH RESEARCH INSTITUTE



Doctors at HonorHealth, in collaboration with HonorHealth Research Institute, implanted the world’s first dual chamber leadless pacemaker, a potentially life-saving device designed to painlessly reset the heart’s rhythm. This launched a new era of pacemakers for patients with abnormal or slow heart rhythms.



10

ANOTHER FIRST

New technique resolves leaky heart valve

HonorHealth was the first site in Arizona to perform a transcatheter tricuspid valve replacement on a patient outside of a clinical trial.

In this advanced technique an artificial, self-expanding tricuspid valve is implanted via a catheter to prevent or reduce tricuspid regurgitation, the backflow of blood into the upper right chamber of the heart.

When this condition becomes moderate or severe, it can be life limiting and potentially, life threatening.





Zain Khalpey, MD, cardiac surgeon at HonorHealth, has been a champion for efforts to implement AI for advanced applications in cardiology and oncology. His passion is focusing on life-saving predictive analytics to prevent sudden cardiac crises. He is leading work at HonorHealth to build imaginative tools deployed directly at the patient bedside.

DONOR SPOTLIGHT

The heartbeat of HonorHealth

"I am pleased to support HonorHealth's cardiovascular center of excellence because heart health is a cause that is deeply important to me. My late husband's family has a history of heart disease, and I understand the impact it can have on individuals and their loved ones.

By giving to this center, I hope to contribute to the advancement of needed care for expert cardiovascular services and prevention efforts that can make a real difference in people's lives. I also believe in the importance of giving back to the community, and this donation is a way to support vital healthcare services that benefit many."

— JoEllen Doornbos



13

CENTER FOR INTERVENTIONAL ENDOSCOPY

As pioneers in this discipline, experts at the HonorHealth Center for Interventional Endoscopy leverage the latest technology and minimally invasive techniques to diagnose and treat a wide range of gastrointestinal (GI) conditions. This team's extensive expertise and innovative approach have brought new hope to patients with complex acute and chronic GI disorders—many of whom have spent years searching for effective care.





Advancements in interventional endoscopy make new, minimally invasive procedures available, reducing hospital stays and recovery time.

14

Fast Facts

191.1 MILLION endoscopic procedures were performed globally

20+ MILLION GI endoscopies are performed annually in the US alone

GI CANCERS RANK 1ST IN MORTALITY. These include cancers of the colon, esophagus and pancreas, increasing the need for even more endoscopic procedures



15

BLUE ZONES | INTEGRATIVE MEDICINE

Better health for our community – one person at a time

Blue Zones Scottsdale teaches a better way to live – not just longer, but healthier through a comprehensive initiative that transforms the environments where people live, work, learn and play to measurably improve community well-being, resilience and economic vitality.

Hand in hand with this community initiative, HonorHealth has become a Blue Zones Certified Workplace. In addition, through the generosity of our donors, we've added an Integrative Medicine program that combines conventional medicine and complementary (alternative) therapies. Using an evidence-based, holistic approach for patients to improve overall wellness and provide relief from chronic conditions.





HonorHealth Corporate was designated a Blue Zones Approved Worksite in 2024, leading healthy living by example.

Fast Facts

It's getting harder to lead a healthy lifestyle. Our environment increasingly encourages unhealthy behaviors.

36% of Americans report they consume fast food regularly

Typical office worker spends
15 HOURS/DAY SITTING

69% of Americans are overweight or obese

Genetics contributes about **20%** to our lifespan; the remaining **80%** is influenced by our lifestyle and environment

We spend **90%** of our lives in the **20 MILES** surrounding our home and workplace, making our environment a major health consideration

17



LIVING HEALTHY TO 100

Meet the Yanellos

Ralph Yanello intends to live to 100! But this isn't just a number to him. Ralph, along with his wife Teresa, are committed to a health span of 100. This refers to the years in which you live free from the restrictions of chronic disease, free to pursue the activities you enjoy.



SCAN QR CODE
Read the rest of the Yanello's story online

18

GREATEST NEEDS FUND

*Meeting healthcare needs
in real time*



RESOURCES AT THE READY

In our rapidly changing healthcare environment, planning is essential. But it's also essential to be ready to pivot when circumstances change or unique opportunities arise.

Gifts to the Greatest Needs Fund provide this flexibility. Usage of this fund is managed by Todd LaPorte, HonorHealth CEO, in consultation with his executive leadership team.

19

Fast Facts

Meeting the system's greatest needs touches patients and staff across the system. The fund provided a wide variety of resources in 2024:

15-PASSENGER VAN to transport Lincoln Learning Center students

2 LYMPHEDEMA TREATMENT TABLES for cancer patients

1 SURGICAL ROBOTIC NAVIGATION SYSTEM for Scottsdale Osborn Medical Center

BALANCE TUTOR SYSTEM for physical therapy patients

A NURSE for Desert Mission's day care program serving seniors with mental or physical challenges

REPLACED EQUIPMENT when updates were no longer supported by the vendor

Every donation touches our patients and the team that cares for them.

20

NURSING EXCELLENCE ENDOWMENT



Fast Facts

Nurses make up **1/3**
of the HonorHealth
workforce

5 OF THE STATE'S 10
Magnet credentialed
hospitals are at
HonorHealth

It costs the system
~**\$100,000** every
time we lose an
experienced nurse

Our goal is that **80%** or
more of our nurses hold
a BSN or higher degree

Supporting our nurses'
professional goals gives
HonorHealth the ability
to recruit and retain
exceptionally talented
nurses.

This endowment is an
enduring investment in
excellent patient care.



21

DONOR SPOTLIGHT

"We were inspired by Natalie's wonderful experience with HonorHealth nurses, who put her at ease and provided exceptional care. Nurses are central to patient care and we wanted to help them continue their training and education."

– Ed Gaylord
Trustee



22

SPECIAL NURSES FOR SPECIAL NEEDS

Forensic Nurse Examiners Program

Last year, 2,550 patients arrived at HonorHealth bearing the injuries of unspeakable acts; 273 of them were under the age of 18.

Behind a curtain of privacy, specially trained HonorHealth nurses provide compassionate, expert care for patients whose injuries are the result of sexual assault or partner violence. They are called Forensic Nurse Examiners, but their patients call them angels.

The International Association of Forensic Nurses certified HonorHealth's program as a Center of Excellence, which led to a grant from the US Department of Justice in 2024. Those funds provided the resources to train nurses statewide and expand our program for pediatric patients.



YOUR DONATIONS PROVIDE A HEALING TOUCH

Heartbreakingly, the number of children requiring this special care has increased over the last year. Donations are also being used to expand the number of nurse examiners special trained in pediatric care.

24

DESERT MISSION

Marzia finds hope for her family

With a wide smile and the warmth of love, you'd never realize that Marzia's life has been filled with challenge after challenge.

She is a devoted caregiver to her daughter Jessica, who was born with Down Syndrome, and to her mother, who lives with them. Marzia herself has suffered from indescribable loss and serious health issues.

But she remains cheerful and grateful, especially for the staff at Desert Mission, who help her with nutritious food from the Food Bank and support from the Living Well program that helps her build habits that improve her self-sufficiency and resilience.



SCAN QR CODE
Meet Marzia, and
watch her story





DESERT MISSION

*Four core programs
weave together a
safety net for our
community*

25

Food Bank

The link between hunger and poor health is undeniable. Families receive a nutritious, full grocery cart of food that includes fresh produce, proteins and pantry staples, in addition to an emergency food box. Desert Mission's community nutrition programs also go out into the community to meet people where they are to provide critical food and nutrition access to individuals and families.

Desert Mission Food Bank distributed OVER 3 MILLION POUNDS OF FOOD last year.



26

Adult Day Health

Older adults, many with dementia, benefit from this safe, supervised program that provides dynamic social, cognitive and recreational enrichment. Caring for the care partner is also a priority, offering much needed respite, resources, and support groups.

95% of our clients live with Alzheimer's disease and other types of dementia. 20% ARE VETERANS.



"All the staff at Desert Mission Adult Day Healthcare are great examples of everything that's right with the world. I have so much gratitude for you all for the loving care you gave to William over the past three years. It allowed us to stay together at home and enjoy our life together. Thank you for the care and the beautiful memories!"

– Nancy, wife of William, past member

27

"Our family wanted to thank all the staff for an amazing art show! We were blown away with the time, thought and love that each teacher put into their classroom and the experiences with the children."



Lincoln Learning Center

A solid foundation for young students between birth and 12 years of age is provided in an accredited early childhood learning center.

98% OF STUDENTS are rated as ready for kindergarten success!

DONOR SPOTLIGHT



29

Desert Mission staff host their generous donors for a tour, including: Lorelei Redding, Linda Werner, Bill Werner and Pete Redding.

28

Living Well

Living Well connects clients to community programs and individual resources to support a journey to self-sufficiency.

874 COMMUNITY MEMBERS

received successful resource navigation and individualized support services in 2024.



30 —

EVENTS



The Honor Ball

The Honor Ball committee worked together throughout the year to plan a smashing celebration of HonorHealth's most philanthropic supporters. Under sparkling disco balls, the 48th annual ball was "to the max!" with its Studio 54-era theme.

The always gracious Laurie and Budd Florkiewicz were named the 2025 Honorees for nearly 20 years of loyal support to HonorHealth.



Left: Honored program guests included Jim and Catherine Tuton, Carter and Susan Emerson, Jared and Lorelee Langkilde, Laurie and Budd Florkiewicz, Todd LaPorte and Christina Reuss, MD

Above: Co-chair Catherine Tuton celebrates the event's success with her friend

Right: Co-chair Christina Reuss, MD, enjoys the cocktail reception with her son, Adlai Reuss and Kennedy Stillwagon

Below: Trustee Sue Fletcher with Robert Stenhouse

Below, middle: Michael and Priscilla Nicholas

Below, far right: Christine and David Watson on the disco floor

SCAN THE QR CODE
to see the video
and photos from the
2025 Honor Ball



THE HONOR BALL 2025

CHAIRS | Christina Reuss, MD and Catherine Tuton

GUESTS | 1,000

PROCEEDS | \$3.2M

BENEFITING | Women's Health programs including Heart Care, Women's Cancers, Labor and Delivery and Behavioral Health/post-partum depression.





NICU Tea & Luncheon

31

The popularity of the NICU Tea & Luncheon has grown each year as we honor the doctors, nurses and families of the Valley's busiest Neonatal Intensive Care Unit (NICU).

September marks NICU Awareness Month and funds raised support the Level III NICU at HonorHealth Scottsdale Shea Medical Center, providing new technology, specialty equipment and the comfort services these families need at a very challenging time in their lives.

Guests could see how this investment pays off. This year's theme, "Wish Upon a Star," featured the wishes of NICU graduates who plan to accomplish everything from being a dad, Blue Angel pilot, baseball player or space traveler. Nothing stands in their way!

7TH ANNUAL NICU TEA & LUNCHEON

CHAIRS | Krystal Grogan, Ashley Stewart

GUESTS | 500

PROCEEDS | \$408,000

BENEFITING | HonorHealth Level III NICU



SCAN QR CODE

Watch the YouTube
recap of the NICU Tea
and Luncheon



2024 HonorHealth Foundation Pro-Am

Once again, Grayhawk Golf Club served as the home course for the HonorHealth Foundation Pro-Am, where pro and amateur golfers filled two courses with morning and afternoon shotgun starts. Winners included Ameriprise Financial (Talon course) and Devenney Group (Raptor course).

32



HONORHEALTH FOUNDATION PRO-AM

CHAIRS | Patrick Fate, Devenney Group
and Jason Light, Okland Construction
PLAYERS | 360

PROCEEDS | \$574,000

BENEFITING | HonorHealth Desert
Mission and Sports Medicine Program



33

Morning of Gold

This annual fundraising breakfast is pure GOLD: Giving Others Love and Dignity by supporting HonorHealth Desert Mission. Keynote speaker Lauren Bailey shared her story of rising from frontline restaurant worker to founder and owner of Upward Projects.

Staff and clients shared powerful stories of how Desert Mission helps families through the challenges of hunger, health issues, housing crisis and more.

MORNING OF GOLD

GUESTS | 450

PROCEEDS | \$375,000

BENEFITING | HonorHealth Desert Mission





34

Fast Facts

In 2024, your gifts secured new dogs, helped renovate their training field and secured a K-9 transport van with specialized kennel and air conditioning to ensure their safety.

HonorHealth has **19 K-9 SECURITY TEAMS** for 24/7 service at six campuses

ADDITIONAL TEAMS are needed to cover HonorHealth's newest campuses

Each dog undergoes a **SIX WEEK K-9 ACADEMY** for specialized training

All K-9 teams must pass the **NATIONAL POLICE CANINE ASSOCIATION POST AZ** Standard Certification

K-9 OFFICERS LIVE WITH THE FAMILY of their work partner

K-9 SECURITY TEAM

K-9 Officers Keep Patients, Visitors and Staff Safe

The K-9 Security Program is wholly dependent on your philanthropic gifts. Beyond the considerable cost of acquiring such specialized breeds, philanthropy also ensures optimal training, nutrition, veterinary care, toys, dog food and equipment.





MILITARY PARTNERSHIP

Vital Training for Military and First Responders

In early 2024, with a grant from the Del E. Webb Foundation, HonorHealth Military Partnership completed extensive renovations to what is widely known as one of the premier military medical training centers in the country.

In a nondescript building near HonorHealth Scottsdale Osborn Medical Center, the Military Partnership trains military medical personnel and first responders with:

- **Advanced practical learning** with high-tech, lifelike human patient simulators called manikins
- **Real-life experience** during clinical rotations at our six medical centers including three Level I Trauma Centers

- **Simulation training rooms**, including one set up as a battlefield medical aid station
- **Readiness Skills Sustainment Training** for any military medical personnel
- Exposure to **burn trauma management** through a Valley burn center
- **K-9 trauma care** for our loyal four-legged soldiers and their handlers



36



Veteran and philanthropist arms military medics with Kevlar

Donors play an indispensable role in shaping the fabric of our community and extend their impact far beyond its borders – in this case – across our nation.

We are profoundly grateful to Trustee Rex Porter and his wife Margie for their steadfast commitment and invaluable support of the HonorHealth Military Partnership program.

Their recent gift, earmarked for Kevlar vests and helmets, has made the mass casualty simulation training at the Military Partnership Training Center in Scottsdale more realistic and thus more valuable to the learners.

37

LEADERSHIP
ADVOCACY
VOLUNTEERISM
PHILANTHROPY

Meet the 2024 Advancing Philanthropy Physician Award Honorees

HonorHealth physicians are special for their commitment to exceptional care. But three particular physicians have also distinguished themselves in 2024 as champions for philanthropy, earning recognition through the Foundation's Advancing Philanthropy Physician Awards program

HONOREE

Dr. David Rizik

*Chief Scientific Officer & Director,
Structural Heart & Coronary Interventions
HonorHealth Heart Care*

Dr. Rizik creates profound connections with his patients that often inspire them to express their gratitude through a philanthropic investment in advancing heart care.

As the founder and director of Scottsdale Interventional Forum (SIF), Dr. Rizik hosts a state-of-the-art symposium, providing attendees an in-depth review of the latest advances in the treatment of heart and vascular disease. He works closely with the Foundation to secure grants that make this event possible.





HONOREE

Dr. Nina Shah

*SVP, Chief Quality & Clinical Value Officer
HonorHealth*

Dr. Shah is the executive responsible for educating HonorHealth and the community on patient safety. Under her leadership, HonorHealth's Leap Frog safety scores stand side by side with the highest in the Valley.

This success is due in part to her collaboration with donors and the Foundation to deploy the largest fleet of germ-zapping robots in the country. Multi-year reports clearly signify the impact of the robots, which have been underwritten by close friends in our philanthropic community.



HONOREE

Dr. Daniel Von Hoff

*Virginia G. Piper Distinguished Chair
for Innovative Cancer Research (retired)
HonorHealth Research Institute*

With a relentless pursuit of cures, combined with his deep compassion for his patients, Dr. Von Hoff has transformed the landscape of cancer treatment and given hope to countless individuals, when often they had none.

Dr. Von Hoff has served as the Virginia G. Piper Distinguished Chair for Innovative Cancer Research at HonorHealth Research Institute, holding the Foundation's only endowed chairmanship, originally funded by the Virginia G. Piper Charitable Trust.



38

WOMEN'S BOARD



Established in 2023, the dynamic members of the Women's Board of HonorHealth Foundation leverage their expansive influence and social networks, serving as ambassadors for HonorHealth.

Their Sharing Our Science (SOS) events attract hundreds of community members interested in learning more about the exceptional care and innovations underway at HonorHealth.



CO-FOUNDERS

Penny Gunning
Ina Manaster



2024-25 MEMBERS

Ina Manaster, *Founder*
Penny Gunning, *Founder*

Members

Marilyn Alexander
Trisha Anthony
Jaime Dion
Patty Dion
Anne-Marie Dobbs
Bobbie Falk
Amy Ferrari
Jean Feuer
Harriet Friedland
Lora Golke
Lenni Griego
Nancy Hanley-Eriksson
Missi Harrington
Tori Heintzelman
Justine Hurry
Rona Kasen
Jill Krigsten
Patti Lau
Sandy Magruder
Linda Mattes
Priscilla Nicholas
Barbara Nichols
Mary Helen O'Keeffe
Diane O'Malley
Kathy Ritt
Andrea Robertson
Bea Rocklin
Barbara Schlein
Jennifer Schuitemaker
Mollie Stern
Sandy Trznadel
Catherine Tuton
Tracy Ulrich Smith
Deedee Vecchione
Christine Watson
Laurie Florkiewicz,
Board of Trustees Liaison

Honor ROLL



As we mark 40 years of transforming the healthscape in Arizona together, we extend our deepest gratitude to you – our incredible donors.

Your unwavering generosity has driven groundbreaking research and provided crucial healthcare programs, directly impacting countless patient lives and building an innovative path to truly personalized care.

You instilled hope where it was needed most.

Thank you for your dedication and belief in our mission. Together, we continue to transform lives and pave the way for a healthier future.

This **Honor Roll** celebrates the difference you have made across these 40 years. Thank you!

DONOR RECOGNITION SOCIETIES

CIRCLE OF *Distinction*

Celebrating your distinctive lifetime generosity.

GUARDIAN OF HONOR

*In recognition of lifetime
gifts of \$10,000,000
or more*

The Honor Ball
HonorHealth Employee
Giving Campaign
Virginia G. Piper
Charitable Trust

CENTURION

*In recognition of lifetime
gifts of \$5,000,000 -
\$9,999,999*

Debi* & Jerry Bisgrove
Farley Family Charitable
Foundation
HonorHealth Auxiliary
HonorHealth
Foundation Pro-Am
Night of Gold
Mr. & Mrs. Charles
W. Palmer ■
Stardust Foundation
Mary Joy & Jerre
Stead ■■
Craig & Karen Stull
Anonymous (1)

LUMINARY

*In recognition of lifetime
gifts of \$1,000,000 -
\$4,999,999*

Abbott Laboratories
Arizona Board of
Nursing
Arizona Public Service
The Arizona Republic
Armstrong/McDonald
Foundation
Charles A. Becker
Foundation
H. N. & Frances C.
Berger Foundation
Howard & Joy Berlin ■
Blue Cross Blue Shield
of Arizona
The Board of Visitors
Mr. & Mrs. Drew M.
Brown ■
Edyth Bush Charitable
Foundation, Inc.
C.A.R.E. by Desert
Mountain Members
Cigna Corporate
Services

Cottrell Foundation
CP Skin Health
Mike* & Carol Dillon
Discount Tire Co., Inc.
Philip* & JoEllen
Doornbos
Curt & Jean Feuer ■
Sue Fletcher ■
Flinn Foundation
Laurie & Budd
Florkiewicz ■
Natalie & Ed Gaylord ■
Goodwill of Central
and Northern Arizona
Erika & Roger Greaves
Michael & Heather
Greenbaum ■
Bruce* & Diane Halle
HonorHealth John
C. Lincoln Medical
Center Auxiliary
HonorHealth John
C. Lincoln Medical
Center Medical Staff
HonorHealth Medical
Staff

Hope for the Cause
- Mirabel Charity
Classic
Thomas* &
Joan Kalimanis
Dalton and Elaine
Knauss Foundation
Margot & Dennis
Knight ■
The Kresge Foundation
Joseph* & Shawn
Lampe
Todd & Kelly LaPorte ■■
Ruth* & Bob Lavinia ■
Lubin-Lorsch Family
Mr. & Mrs. Frederick
A. Lynn ■
The Kemper & Ethel
Marley Foundation
Lori McClelland &
Michael Harris and
Family
Fred & Linda
Milanovich
Nicholas Family
Foundation ■
Playing for T.I.M.E.
Bill Pope

Jeffrey G. &
Barbara Schlein ■
Barbara Scrivner
Siemens Healthineers
The Silverman Family
Foundation
The Steele Foundation
Linda* & Bob Teal
Mr. & Mrs. Frank D.
Trznadel ■
Valley of the Sun
United Way
Kathleen & Robert
Wade ■
Rob & Melani Walton
Foundation
Mr. & Mrs. David J.
Watson ■
Del E. Webb
Foundation
Wells Fargo
E. Louis Werner, Jr.*
& Sandy Werner
Anonymous (4)

CHAMPION

In recognition of lifetime gifts of \$250,000 - \$999,999

Abiomed
Pat & Lou Adimare ■
Affiliated Hospitalists, PLC
Albertsons Companies Foundation
Marilyn & Dave Alexander
Janet & Benny Alon
Ameriprise Financial
Aramark Healthcare
Arizona Center for Cancer Care
Arizona Community Foundation
Arizona Diamondbacks Foundation
Arizona Food Bank Network
AstraZeneca
Margaret & Donald Austin
Mary Ann & Looe Baker III
Ron & Ruth Baker ■
Bank of America
Philip & Lydia Bell
BHHS Legacy Foundation
Elizabeth Biaett & Gary Dickey
Lyn & David Bishop
BOK Financial
Harriet D. Brewster Foundation
Cathi Brock & Vicki Louck
Cheryl & Robert Budde
Bev Burroughs & Jeff Jakus
Ranie & Michael Cahill
Paul Calderon & Mary Crawford ■
Cardiovascular Consultants, Ltd.
Margaret & Chad Carpenter
Melvin* & Carol Carro
Casino Arizona
CDW Healthcare
CenturyLink
Carol Clemmensen
Larry Clemmensen

Robert Kemper
Corrigan Foundation
Barbara* & Steven Crystal and Family ■
Herbert K. Cummings Charitable Trust
The Nathan Cummings Foundation
Carol & Ted Curtis
Kristine & Richard Davidson
Brad Davis
Sallie & Don Davis
Deer Valley Medical Center Medical Staff
Deer Valley Medical Center Volunteer Services
Delta Dental of Arizona
Devenney Group Ltd., Architects
Ric & Robin Donnelley
Jacquie & Bennett Dorrance
Herbert H. & Barbara C. Dow Foundation
Susan & Bob Duffy ■
Eastman Kodak Company
Linda & Marc Ellin
Susan & Carter Emerson ■
Empower
Ensemble Real Estate Solutions
Envision Healthcare Corporation
Epic
Ethicon Endo-Surgery - A Johnson & Johnson Co.
Bobbie & Robert Falk
Trish & John Ferree
Mr. John Fick & Dr. Catherine Klinger
Amy & James Foley
Rhonda & Christopher Forsyth
Jamie & Marc Foulkrod
Joan & Rick Fox
John Franzone & Klarke McKissick
David L. & Cathy D. Freedman
Fry's Food Stores
Helen M. Galvin Charitable Trust
Joanne & Ernest Garcia

Michael & Sheila Geddes
Sheila* & Richard Gerry
Dr. Marysia & Matthew Gerson
Janet Henrich Glaser & Chip Glaser
Robert & Linda Glassman
Sasha & Rodney Glassman ■
Globe Foundation
Lisa & Jeffery Gordon
Terry & Mary Ellen Gould
James & Deborah Graber ■
Barbara & Howard Grace
Dayton F.* & Laura R. Grafman
Great Clips
Dr. Linda & James Greer
The Harold & Jean Grossman Family Foundation
Salvador Gutierrez & Mary Anderson
Cal & Trudy Hahn
Colleen & David Haig
Julie & Mark Hancock
The Hankins Foundation
The Hansen Family Foundation
Norman & Donna Harbert
Jamie Hebets ■
Sandra & Michael Hecomovich
Kathleen & Gary Heidenreich
Tracey & Greg Hemstreet ■
Carol & John Henderson
Jan & Howard Hendler
Lewis Henkind & Donna Isaacson
Lynne & Lang Herndon ■
Jeanne & Frank Hertz
Fred Hessler & Kathie Mundy ■
Dr. Kim & Wally Hewson
Rhonda & Brigadier General J. Derek Hill
Hologic
Stewart Horejsi

Cheli & Jess Hull
Carolee & Steven Hunton ■
The Ibis Foundation of Arizona
International Association of Forensic Nurses
Dr. & Mrs. Delmas Jackson
Kirk & Judi Johansen ■
Craig Johnson
Delbert W.* & Marjorie Johnson
Mr. & Mrs. Thomas F. Jones, Jr. ■
John & Barbara Jorgensen
JPMorgan Chase & Co.
Dan Kammrath
Ellen & Howard C. Katz ■
Julie & Eric Keen
Kitchell Contractors, Inc. of Arizona
Mark & Betsy Kogan
Kuhle Family Foundation
David Larcher
Larson Family Foundation
Las Salas, Inc.
Terry & Sara Lee
Diana* & Ron Leeds
Kathleen & Donald Levin
Delbert* & Sharron Lewis ■
The Lincoln Family
Kathryn Lincoln & Christopher Perez ■
Pit & John Lucking ■
Murray & Ina Manaster ■
MassMutual Financial Group
Tim & Alison McAdam ■
McCarthy Building Companies
McKesson
Medical Diagnostic Imaging Group
Medtronic
MidFirst Bank
Naomi Caras-Miller & Alvin H. Miller
Doris* & Eliot Minsker ■
Henry & Ardis Mohrschladt
Suzanne & Glenn Morris ■

Dave Mortensen & Susan Levy
Motorola
Dr. A. Leonard* & Lynn Nacht
Tally & Nate Nathan
Patricia & Bill Naumann
Dr. John & Shaheen Neil ■ ■
Northern Trust
Kim & Mike Novotny
Jan & Stephen O'Neill ■
Papp Family Foundation
The Bob and Renee Parsons Foundation
Patient Centered Outcomes Research Institute
Jannie & Elliot Pearlman
Dr. Savas Petrides* & Terry Switsky
Pfizer
Phoenix Affiliate of Susan G. Komen for the Cure
John William & Valerie L. Pihl ■
Shirley & Paul Piper
Pivotal Foundation - F. Francis & Dionne Najafi
Plexus Worldwide
PNC Bank
Kate & A.J. Pollock
Lloyd* & Sharon Powell
The Dr. William Price Trust
Douglas* & Anne Pruessing
PSS Family Fund
Nina Mason Pulliam Charitable Trust
Pete & Lorelei Redding
Lillian & Jim Reed ■
Kelley & Keith Reese
Frederick B.* & Pam Rentschler
Republic Services
Kevin Reynolds & Marnye Summers
Jeff & Margie Robberson
Nancy Robertson ■
Terence & Robin Roche
Maureen* & Paul Rubeli
Rita & Richard Russell ■

CIRCLE OF *Distinction*

Howard & Jill Sadkin
Tom & Mary Sadvary ■
Nancy & William Sampson
W. Scott Schirmer ■
Scottsdale Charros
Scottsdale Emergency Associates, Ltd.
Bud & Sue Selig
Shamrock Foods
Susan & Richard Silverman
The Donald & Kimberlee Slager Foundation
Barbara Slater
Rebecca & William Smead
Joe & Madonna Smyth
Snell & Wilmer
Southwest Human Development
Southwest Medical Imaging
Bud* & Judy Stanley
Barbara Henkind Steiner ■
Carolyn & John Stuart
Shireen Malouf Stuart
Michel A. Sucher, MD ■
Surplus Line Association Foundation
Robynn & Robert Sussman ■
Susan & Nicholas Sutton
Nancy Teets & Heidi Teets
The Thunderbirds
Bob & Corrine Tomlinson ■
Sally & Gregg Tryhus ■
Fred* & Mary Tucker
Catherine & Jim Tuton ■
US Airways
The USAA Foundation
Valley Anesthesiology Consultants, Ltd.
Dr. & Mrs. Kevin Veale ■
John & Marguerite Verani

Binu & Kuldip Verma
Vitalyst Health Foundation
W. D. Manor Mechanical Contractors
Alan* & Irene Weinberg
Mary Ann Wells
Linda & Bill Werner
Ann & Steve Wheeler ■■
The Winssinger Family
The Withycombe Family ■
Dr. Judith G. Wolf ■
Joan & D. Ronald Yagoda
Teresa & Ralph Yanello
John A. Yates, Sr.* & Charlotte Yates
Pat & Barry Yellen
Marlene* & Lee Zuker
Anonymous (15)

CAPSTONE

In recognition of lifetime gifts of \$100,000 - \$249,999

Abbott Nutritional Products
AHA Hospital Research & Education Trust
Peter* & Judy Ambelang
American Slavic Association
American Valet
Barbara J. Anderson
Anthem at Merrill Ranch Community Council "Walk for the Cure"
Arizona Country Club
Arizona Oncology
Mary & Marty Aronson ■
Atria Heart Clinic
Avnet
Barrow Brain and Spine
Barton Family Foundation
Timothy & Carol Barton ■
Edward Baur, Sr.* & Michele Baur
Julie & Tom Belgrad

Belmont Equipment
Richard & Diane Belveal
Judi & Paul Bennett
Naomi & John V. Berry
BMO Harris Bank
Boston Children's Hospital
Judith & Peter Brandeis
Linda Brock, PhD
Dr. Karen A. Brown* & Mr. David R. Wolford
Candelen
Cannon & Wendt Electric
Cisco Systems, Inc.
Citigroup
Amy & Andrew Cohn
Paula & Dan Coleman
Tim & Nan Corwin Charitable Pass-Through Grant Fund of the FM Area Foundation
Jennie* & Jerry Cox
Robert* & Patricia Cox
Paul & Claudia Critchfield
David A. Damore
The Dial Corporation
DMB Associates, Inc.
Manda & Rahul Doshi ■
DPR Construction
Eileen & Charles Dubroff
Sarah & Tony Earley
J. Orin* & Charlene Edson
Edwards Lifesciences, LLC
Eli Lilly & Company
Dr. & Mrs. Thomas L. Emmick
Ernst & Young
Nelson Faux, MD
Fiesta Bowl
Julie N. Firestone
Tom & Joyce Fisher
Sheila & Alan Fitzgerald
Linda & John French
Penny Galarneau ■
Gammage & Burnham
GE Foundation
Genentech BioOncology
General Dynamics
Gilbane Building Company
Susan & Jerry Gilbert

Darilyne* & Garry V. Goett ■
Goldberg Family Foundation
Dr. Charles & Laurie Goldstein
Wendy & Peter Gordon
Greenberg Traurig, LLP
Ingrid E. Haas, MD & Mr. Charlie Van Dyke ■
Hansen Mortuaries and Cemetery
Pete & Mimi Hathaway ■
Connie & Don Head
Healthpeak Properties, Inc.
Ray* & Anne Henning
Laura & Jim Herbster
Charyn & Bud Hoffman
Honeywell
HonorHealth Gift Shops & Thrift Store
HonorHealth Heart Group - John C. Lincoln
R. S. Hoyt, Jr. Family Foundation
Humana
Hunt Construction Group, Inc.
Dr. Ray & Eunice Hurm
Independent Hospitalists
Industrial Development Authority - City of Scottsdale
ING Aetna Financial Services
The Jack Ingebretson Foundation
InterTech Computer Products
Jan & Norm Jacobs
Dolf* & Diane Jakobs
Johnson Family Foundation
Jones, Skelton & Hochuli
Kaufman Hall & Associates
Kandy Kendall & Ann Beisser
Kent & Wittekind, P.C.
Regina & William Keough
J. W. Kieckhefer Foundation
The Stuart E. Kirk Family
Dr. Clarke & Laurel Lambe

Robert* & Adelyn Leander
Mrs. William M. Leslie, Jr.
Mr.* & Mrs. Bruce R. Lieberman & Family
Lincoln Emergency Physicians
Lipman Family Farms
Annell Livingston
Local Initiative Support Corporation
Lockton Companies
John F. Long Foundation
Penny & Wayne Mailloux
Dr. & Mrs. Frederick F. Marciano ■
Cheryl & Chris Melocik ■
Merrill Lynch
Mary & Joe Moeller
Dr. Phillip & Brenda Moeser
Carole & Arturo Moreno
Margaret T. Morris Foundation
Rob Moy Memorial Motorcycle Run
Elyse & Bill Newton
Don Nierling Memorial Foundation
Okland Construction
Olsson Family Foundation
orcutt | winslow
OrthoArizona - Arizona Bone & Joint Specialists
The Osteosarcoma Institute
Pediatrix Obstetrix Medical Group
PetSmart
Philips Image Guided Therapy Devices
Philips Ultrasound
Phoenix Suns Charities
John & Cory Pollack
Rex & Margie Porter ■
Mr. & Mrs. Douglas Post ■
Joan* & Dr. Wilfred M. Potter
Priority Ambulance
Janet & Frank Pugh ■
Pulte Homes
Robert V. Rasmussen Foundation

The David E. Reese Family Foundation
 Andrea & Bradley Robertson
 Salt River Project
 Max M. & Marie A. Schirtzinger
 Phil & Nancy Schneider
 Schumacher European, Ltd.
 Scottsdale Pathology Associates, Ltd.
 Larry Seay & Barbara Walchli ■
 Drs. Maulik & Nina Shah ■
 Steve J. Shain
 Dr. & Mrs. Richard Silver ■
 Traci Dancer-Silverman* & Tom Silverman
 Bill* & Ilene Smith
 James & Norma Smith Foundation
 Mary Jean Snell
 Sonora Quest Laboratories
 Southwest Ambulance
 Carol & David Stahle
 Barbara & Joseph Straining
 Dr. Frank & Linda Surdakowski ■
 Vern & Cille Swaback
 Paul* & Patricia Taylor
 Tel Tech Networks
 Telagen West, LLC
 The Tradition at Desert Mountain
 Trends Charitable Fund
 The Tribune
 TriWest Healthcare Alliance
 Sharon Ulrich, Christian Ulrich & Tracy Ulrich-Smith
 Ultimate Software
 Valley Radiologists
 Valley Surgical Clinics
 Van Loo Family Trust
 Arvind* & Karen Varma
 Vitalant
 Dr. & Mrs. Daniel Von Hoff ■
 Ann & Carlos Wagner

Lester A. Walker Foundation
 Mr.* & Mrs. Howard E. Wall
 Patricia & Michael Welborn ■
 Drs. James & Charlene Whitfill ■
 Jerrye Wilmoth
 Carol & Robert Wolfe
 Mr. & Mrs.* Jack Woltz
 Kimball & Marilyn Woodrow
 Philip* & Kathy Zeblisky
 Anonymous (3)

KEYSTONE

In recognition of lifetime gifts of \$50,000 - \$99,999

21st Century Oncology
 ABM Janitorial Services
 Dayton & Shelley Adams
 Aetna
 Affiliated Chest Physicians
 All Saints Lutheran Church
 Alliance Bank of Arizona
 American Cancer Society
 American Express
 American General Financial Group
 American Society for Metabolic & Bariatric Surgery
 Angelica Textile Services
 Archsol
 Arizona Facility & Consulting Services
 Arthur Andersen & Co.
 Gail* & Robert Auslander
 Kathy & Larry Bain
 Gary & Janet Baker
 Susan & Stephen Bansak
 Jerry Barnier & Julie Johnson
 Patricia Barrows
 Bashas
 Gina & Tom Batson ■
 Frederick L.* & Marilyn Bauch
 Janet & Doug Baughman
 Beacon Pointe Advisors

Kim (Mickey) & Sally Beisser
 Deanna Hopkins Bell ■
 Joyce & William Bendix
 Rebecca & William F. Bennett
 Jay I. Berk
 Beus Gilbert Law Firm
 BKD CPAs & Advisors
 Blue Zones Scottsdale
 BMC Electric Co., Inc.
 Bonneville
 Donna & Gus Boss
 Ginger & Don Brandt
 Dr. Melanie A. Brewer & Kenneth T. Krebs
 Don & Nancy Brinton
 Dr. & Mrs. C. Gilberto Brito
 Marilyn & Marvin Brodie
 Shirley* & C. M. "Bud" Brooks
 Sandy & Jim Bruner ■
 Dr. & Mrs. James Burke
 Cachet Homes
 Cardinals Charities
 Sandra & Robert Carnevale
 CBIZ MHM
 CBRE
 Keith* & Elaine Christian
 Cigna Healthcare of Arizona
 Climatec Building Technologies Group
 Larry & Kimberly Coben
 Continental Homes
 Nancy* & Ben Costabile
 Jim & Maxine Coyne
 Coyotes Charities
 Dr. & Mrs. Jack Crowe ■
 Pamela L. Crowe
 Cuninghame Group Architecture, Inc.
 Craig Cunningham
 CVS/Caremark
 Shirley & John Dean
 Ira W. DeCamp Foundation
 Deloitte
 Margaret J.* & Edwin K. Delph
 Desert Financial Credit Union
 Desert Mountain Consultants in Anesthesia

Desert Mountain Properties
 Karen & Bryan DeWitt
 Victoria & Peter DeWitt
 Diagnostic Hybrids, Inc.
 Harvey* & Marnie Dietrich
 Dignity Health
 Gerardine & Andy DiSabatino
 Drs. Carole & David Drachler
 Liz & Ken Draeger
 Dreiseszun Family Foundation
 The Herbert R. Drinkwater Family
 Drive 4 Doug
 Dennis* & Anne Eardley
 James O. & Catherine L. Eide
 Cathleen & Drue Engels
 Enterprise Bank & Trust
 Ardie & Steve Evans
 Extreme Integration
 Sally & David Falck
 Gail & Gerry Farber
 Alberta B. Farrington Foundation
 Edward Fein
 The Fellingham Family
 FHP Health Care
 Heather Figelman
 First Christian Church
 Dr. & Mrs. James Fishman
 Melinda & Bernard Francois
 Stuart & Sharyn Frankel
 Fraternal Order of the Eagles - Grand Aerie
 DeeDee & Richard Friedlander
 Dr. & Mrs. Jay S. Friedman ■
 Tamara & Julian Fruhling
 Arthur L. & Joan A. Funk Charitable Foundation
 John* & Marita Gallagher
 Scott Gauthier
 GE Medical Systems
 Barbara & Charles Geer

Linda & Vic Getsinger
 Gila River Indian Community
 Barbara & Peter Giovan
 Mary Lou O'Brien Goldstein & Melvin M. Goldstein
 Bob* & Marty Gonzalez
 Gary* & Ann Goodman
 Frank & Betsy Goodyear
 Mrs. Mary D. Gosule
 Belle Griffiths
 The Haldan Family
 Greg & Marti Hancock
 Nancy Hanley
 Heartstrings - DC Ranch Community Foundation
 Ralph* & Maxine Henig
 Henkel Corporation
 Hernandez Companies
 Andrea & Mitchell Hershey
 Hirtle, Callaghan & Co.
 The Hitzeman Family
 HonorHealth Rehabilitation Hospital
 Lynda & Arthur Horlick
 Leonard* & Sue Huck
 Innovation Care Partners
 Carolyn & Craig Jackson
 Jacobsen Construction Company
 Theodore J.* & Helen Jaros
 Jessco Electric
 Deanna & Thomas Jones
 Maureen & Joseph Kaiser
 Rona & Allan Kasen
 Carol* & Ken Kasses
 Beverly & Douglas Kilgore
 Richard & Eileen Kilstrom
 Golda O. King
 Kirksville College of Osteopathic Medicine
 Ana & Mike Kleingartner
 Susan & Moe Krabbe
 Donna & Joel Kramer
 Lamar Advertising

CIRCLE OF *Distinction*

David* & Lynn Lamparter
Linda & James Landers
Ellen & Craig Langel
Lanmor Services, Inc.
Eleanor Light
Lillibridge Healthcare Services
Christine & Bruce Lincoln
Joyce Lippincott
Kathryn & Robert Londeree
Louis Foundation
Stacy & Mike Lovell
Shari & David M. Lowe
Mr. & Mrs. Randall B. Luster ■
Robert* & Gloria Lux
The MacLeod Family
Jean Marley ■
Gail & James Marten
Mr. & Mrs. Stephen A. Martori
Mayo Clinic Jacksonville
Dr. Robert McCulloch
Medtronic Foundation
Merck & Co.
Midwestern University
Steve Mihaylo & Lois Mihaylo Foundation
Joy Rivelli Miller
William & Joanne Moeller Foundation
Judy & Bijan Mohraz
Marilyn* & Joseph Monteleone
Morgan Stanley
Caroline & Wayne Morong
Susan & Mark Mulzet
Debi Murphy, Rusty Gavette & Eric Gavette Family
Dr. & Mrs. Alfred Mutchnik
Jill & Rob Muth
National Bank of Arizona

National Hair Loss, LLC
Dan & Diane Nelson
Dr. Tiffany & Dan Nelson ■
No Kid Hungry
Otto Environmental Systems North America
Owens & Minor
Kathy & Terry Ozan
PacifiCare of Arizona
William H. & Mary B. Parker
Nick Patel
Camille Lincoln-Paulin & Gregory Paulin
Stanley K.* & Julia Paulsen
Chad Paulson
PepsiCo
Phoenix IDA
Elisa & Jonathan Pinkus
The Pizzimenti Family
The Plaza Companies
Jody & Kerry Pokorski
Dr. Jack & Ruth Poles
Max & Judith Poll ■
Polsinelli
Dr. John A. Pope & Mr. Gregory English ■
Jill & Larry Porcellato
Dana K. & Peter A. Powell
Premier, Inc.
Price Charities
April & David Price ■
Marilyn Propstra
The Honorable & Mrs. Dan Quayle
Bob Ramsey & Jenny Norton
Jennifer & Nayankumar Ranchhod
Vikki Raskin & Larry Smith
Marilyn Reese
Relizon

Bob* & Karla Reynolds
Deborah & Dale Rittenhouse
Drs. W. Scott & Karen Robertson
Dr. & Mrs. Irv Rollingher and Family
Rotary Club of North Phoenix
Dr. & Mrs. Thomas Runyon
Dr. & Mrs. Vincent J. Russo
Richard E. Ryan Family
Mary Jane Rynd
Vicki & Allen Samson
San Francisco Giants
Sanders & Parks
Dr. James L. Schamadan & Family ■
Maria & Peter Schick
James Schmidlin
Joseph* & Rana Schwartz
Dr. Gerald & Donna Schwartzberg
Scottsdale Cancer Center
Scottsdale Fashion Square
Scottsdale Insurance Company
Chuck & Beth Scully
The Segal Family
Jean & Dick Segil
Enid & Michael Seiden
Meg & Steve Seoane
Sharecare Health Data Services
Ann Shideler
Shockwave Medical
Elaine & Robert Shower
Silver Lining Wealth Advisors
Diane & Jay Simons
Carolyn & Peter Slocum
SmartPractice
Linda & Irwin Smith
Stacy & Joseph Soderholm
Sunny & John Solheim
Elaine C. Spencer
Patricia Spencer
Standard Register
Christine & Frederic Stockton
Sundt Foundation

Betsy & Gary Swenson
SYNTHES USA
Maurice* & Lois Tatelman
Tatum Ranch Golf Club
TDIndustries
Tech Data Corporation
Teleflex
The Torhjelm Foundation
Valley Toyota Dealers
The Vanderhout Family
Volcano Corporation
Walmart Foundation
Waste Management of Arizona
Pamela & John Watson
Robert "Bob" Wenham
Adiba & Marc Wichansky
Don E. Williams
Dr. Mark & Laura Williams
Melissa Withers
Woodward Family Fund
Dr. Clark & Sandi York
Anonymous (12)

CORNER- STONE

In recognition of lifetime gifts of \$25,000 - \$49,999

Abbot Downing
Joyce* & Roger Adams
Advanced Marketing
Advanced Network Management
J.R. Albert Foundation
Anatomic Pathology Associates
Anchor Health Properties
Stephen & Teresa Andersen
Melinda & Lyle Anderson
Jerry* & Dora Angle
Nathan Anspach & Maritza Cabrera
Arizona Commercial Management
Arizona Digestive Health
Arizona Health Facilities Authority
Arrow Electronics

Assistance League of Phoenix
AtriCure, Inc.
The Auen Foundation
Auxilio, Inc.
AZ Neonatology
Susan & Kenneth Baker
Kim & James Balaschak
Jim* & Nancy Baldwin
Banner | Aetna
Susan Barrett ■
April & Eugene Barron
Barton Malow Company
Polly & Thomas Baughman
Bhandal Bros
BHE Renewables, BHE Transmission & Long Realty
Biosense Webster
Brent* & Karen Blackey
Robin Blackstone, MD
Mary Jo Bobbe
Andrew* & Lynn Bohrsen
Boldt Capital, LLC
Drs. Aimee & Erkut Borazanci ■
Angelique Bork
J. William & Marilyn W. Boyce Charitable Fund
Carol* & Arthur Brandon
Dr. Mark Brenner & Kathy Blair
Brighton Collectibles
BrightView Landscape Services
Betsy & Kent Bro
Broening, Oberg, Woods & Wilson P.C.
Mary Jo & Bill Brown
Dr. Brad & Lisa Bruns ■
Builders Guild
Elizabeth & Richard Burns
Stephen* & Shelby Butterfield
The Caden Thomas Foundation
Dr. & Mrs. William Cain ■
Mary & Nicholas Calise
Cannon Design
Sharon & Lloyd Canton
Shaun* & Mary Cantrell

Cardinal Health
Cardinal Health
Foundation
Joey* & Ivonka Carter
Jose V. Catalan
Cerner Corporation
Alaina & Louis Chabrier
Charon/ECA
Pasquale* & Nancy
Cheche
Susan & Daniel
Childers
Linda & Michael J.
Christensen
Beatrice Clark
Coborn's Incorporated
Jim & Maria Cockrum
Bill* & Dorothy Cohen
Lawrence* & Renee
Cohen and Family
Libby & Joel
Cohen, MD ■
Linda Cohen
Priscilla & Louis Cohen
Commercial Service
Solutions, LLC and
Image Property
Services
Congregation
Beth Israel
Richard* & Sandra
Conner
The Clarence & Almeda
Conrad Foundation
Cooper Tire & Rubber
Company
John & Tina Cooper
Laraine & Larry Coplin
Coppersmith Gordon
Schermer Owens &
Nelson, PLC
Mary Cornell
Michael Craig* &
Christine Kontgas
Mr. & Mrs. James
Cramer
Mary Lynn & Thomas
Crowley
Cuneo Foundation
CVS Caremark
Charitable Trust
Cypress HomeCare
Solutions
Andrei Damian, MD
Deaderick
Investment Co.

Deer Valley Unified
School District
James & Teresa
DeLellis
Michael & Geri DeMuro
DeRoy Testamentary
Foundation
Desert Carousel Horse
Show
DHE Engineering
Dickinson Wright PLLC
Dillard's
Dr. Patrick J. Donovan
& Ms. Cynthia A.
Byers
Heidi & Timothy Drier
Duley-Bolwar &
Associates, Inc.
Mr. & Mrs. Donald
Dupree
Dutch Bros Coffee
Dr. Michael &
Suzanne Eder
Deb Ehrlich
EMC² Corporation
Emergency Medical
Consultants
Employees Community
Fund of Boeing
Arizona
Linda & Alan Englander
Enterprise Mobility
Dr. Jay* & Dee Epstein
Dr. Ruann Ernst &
William Riffle
Hamilton Espinosa
Mrs. Elliott M. Estes
Darlene M. Evancho
Ruth & Dennis Evans
Express Scripts
Foundation
Elizabeth Farhart &
Brad Gazaway ■
Pierre Fauchard
Academy Foundation
Betty & Dr. Bertram
Feingold
Fetal & Women's
Center of Arizona
The FINOVA Group, Inc.
Sandy & Alan Forman
Wayne Frangesch ■
Shannon Fox Fraser &
William Fraser ■■
Fraternal Order of
Eagles, Arizona State
Fraternal Order of
Eagles, Sunnyslope
Freeport-McMoRan

Copper & Gold
Dr. & Mrs. Jack A.
Friedland
K. Donald* & Mollie Fry
FSMB Foundation
Fukuda Denshi
Barry & Kathy Fuller
Marilyn* & Lawrence C.
Gabriele
Debbie Gaby Charities
Jerry & JoAnn Gaffaney
Gallagher & Kennedy
Leslie* & Robert
Garson
Drs. Bernard & Sharon
Gburek ■■
General Mills
Foundation
Jan & Alfred Ghelfi
Paul Giancola & Carrie
Lynn Richardson
Jack & Lisa Gildar
Inger & William
Ginsberg
GlaxoSmithKline
Go Green Landscape &
Janitorial Services
Herb* & Judy Gold
Gale & Scott Golden
William* & Ellen
Goldstandt
The Goodyear Tire &
Rubber Company
Dr. & Mrs. Bradley
Gordon
Govig & Associates
Dr. Randall & Jane Grace
Grand Canyon
University
The Grayhawk
Classic Residents'
Foundation
Margaret & Julian
Griffin
Krystal & Christopher
Grogan
Kathy & Dan Grubb
Larry & Margo Guli
Jan & Travis Hair
Carrie & Brian Hall
David & Kathleen Hall
Dianne & Kirt Hall
Hanger Prosthetics &
Orthotics
Joan & Donald Hansen
Coleen & John
Harrington

Harris Healthcare
Solutions
Mrs. John D. Harris
Laura Hays
Blaise Hazelwood
Health Net of Arizona
Healthcare Transitional
Funding Corp
Barbara & Jerrold
Heller
Dolores & Melvyn
Heller
Thomas Hendricks
Aaron* & Dorothy
Henschel
Hensley & Co.
Herman & Sons Piano
Co.
Judy Hewson
Howard Hirsch* &
Lori Maling
Sandra Hoffman
Susan Hoffmeister ■
Carol Hogan
HonorHealth
Ambassadors
HonorHealth Research
Institute
John & Elaine Horejs
Brenda & James
Howard
William Howe* &
Christine Hardy
Linda & Mark Howes
The Humana
Foundation
I-ology, Inc.
Integrity Building
Ironwood Cancer &
Research Centers
Gunilla & Lars Isaksson
IT Partners
Dr. Stephanie Jackson
JE Dunn Construction
Roger & Deni Jeschke
Mr. & Mrs. John M.
Jetter
Dr. Jill Gives Hope
Foundation
Nancy* & Richard
Joaquim
Johnson & Johnson, Inc.
Gregg & Carol Johnson
Janet* & Dr. Stephen
Jones

Jones Medical
Industries
Sondra & George
Juetten
Junior League of
Phoenix
Dr. & Mrs. Jamie Kapner
Robert* & Sue Karatz
Merrill & Van Kasper
Dr. Gary & Catherine
Kauffman ■
Kids Sports Stars -
Azimuth Foundation
April & Greg Kilfoyle
Rev. Dr. L. Wilson
Kilgore* & Arlene
Knight Kilgore
Diana & Mark Kirk
Dr. & Mrs. Joseph V.
Klag
Eleanore & Will Klein
Keith* & Jo Kleist
Cliff & Antoinette (Toni)
Klima
Mr.* & Mrs. Ralph M.
Knight
Shannon & Ron Kotloff
Dr. & Mrs. Stuart Kozinn
Theodore* & Barbara
Kraver
David* & Robin
Kreutzberg
Terry & Mark
Krivoruchka
Mr. & Mrs. Andrew
Kroot
Nathan* & Donna
Kurzrok
Mr. & Mrs. Kelly LaFay
LaneTerraever
Loralee & Jared
Langkilde ■■
Dr. Paul & Debra
Laprade
Leslie's Charitable
Foundation
Edward A. Lesser
Jon* & Carol Levy
David* & Sara
Lieberman
Gregg & Laurie Lien
Elizabeth & James
Lincoln
Lillian Lincoln
Foundation
Linda's W.I.S.H.
Llama Medical

CIRCLE OF *Distinction*

Drs. Katherine
Sutherland Loewen &
John Loewen

Logicalis

Roman Lopatynski*
& Cindy Litterer
Lopatynski

Eric Lorentzen

LPGA Foundation

Wendy & Peter Lyons

Karl & Patricia Maas

Julie Arvo MacKenzie &
Robert MacKenzie ■

Macy's

Mammel Foundation

Manheim Phoenix

Lalit Mansukhani ■

Markland Properties, Inc.

Susan & Barry
Markowitz

Marsh USA, Inc.

Julie Martin ■

Lucia Marusiak

Jenny & Don Matheson

Mayo Clinic Scottsdale

Debra & Barry McBride

Dr. Donald F.* &
Joy McCann

Michael McCartney &
Marlene Patino

Margaret & Michael
McCormick

Carol Henderson
McCune

McDonough
Corporation

McDowell Mountain
Music Festival

McGough

Randy McGrane

Mary McKeon

Barbara & Dr. Stephen
McMurray

Anne McNamara &
Shawn Harrell

Betty McRae

Laurie McWeeney

Mead Johnson
Nutritionals

Lisa & Derek Mead

Mediant Health
Resources

MEDNAX Services, Inc.

Susan & Charles Melker

Drs. Deborah & David
Mendelson ■

Mercedes-Benz of
North Scottsdale

Meritage Homes

MFS Investment
Management

MicroAge

Microsoft

Susan & Arthur Miele

Steven* & Jeanine
Mielke

Emily & Joseph
Mikhael ■

Frank* & Jan Miller

Larry H. Miller Charities

JP & Monique Millon

Mr.* & Mrs. Edward
Minor

Marcia Mintz & Liz
Delgado

Jeanne & Michael Mirro

Lisa Montman ■■

Moon Valley Country
Club

Marta Moraga-Doherty

Deborah & Stewart
Morick

Jeff Morrow

Bill* & Janet Mueller

Judy & Kent Mueller

Patrick & Barbara
Murphy ■

Mutual Insurance
Company of Arizona

Jim & Dr. Jackie Myers

Andrea Nasi & Ellen
Downey-Nasi

Dr. Stephen & Marti
Nathan ■

Network for Continuing
Medical Education

Next Era Spine Care

North Phoenix
Emergency
Associates

North Phoenix
Infectious Disease

Mariangela &
Christopher Noyes

nThrive

Nuclear Electric
Insurance Limited

Bonnie Nutt

Ogletree Deakins

Catherine & Douglas
Olesen

Freidolph K.* &
Bonnie Olson

Diane & Patrick
O'Malley

OpenWorks

Orangewood
Presbyterian Church

Aileen* & Meyer
Osofsky

Outfront Media

Pacific Life

Pacific Office
Automation

Lindsay & David
Pagano

Panoramic Press

Margaret & Anthony
Paoni

Parke-Davis – A Warner
Lambert Division

Samuel Parker

Andrea Parrella* &
Lee Hurney

Partners for Paiute

Sushmitha Patibandla &
Srinivas Challapalli ■

Bernard* & Joyce Patton

Bobbie & Michael
Paulson

Leslie & Bruce Pearson

Marcia* & Borah
Perlmutter

P.F. Chang's China Bistro

Phelps Dodge
Foundation

Phoenix Emergency
Group

Phoenix Motor Company

Phoenix Thunderbird
Rotary Club

Barbara M. Pickrell

Kathleen & Ken Player

George Prentice*
& Julie Kaufman-
Prentice

Helene & Joe Presutti

Darlene Keller-Price &
John Price

Linda & Richard Price

Prosthetic Orthotic
Associates

Prudential Arizona
Realty

Purdue Pharma

R.O.I. Properties

Dr. Priya Radhakrishnan
& Dr. Rajiv Poduval ■

Radiology Partners

RBC Wealth
Mangement

Don* & Lynn Reed

Kris & David Reid ■

Peggy Reiley

Arlene & Richard
Reitman

Brian* & Barbara
Renwick

Dr. Blair & Lori Reuben

Christina S. Reuss, MD ■

Ann & Rex Rice

Dr. & Mrs. David G.
Rizik ■

Robb & Stucky

Ramona & Roger
Roberson

Thomas G.* & Jean
Reed Roberts

Dr. Leslie* & Cindy
Robinson

Michaelynn & Bill
Robinson

Roche Laboratories, Inc.

Dr. & Mrs. Francisco
Rodriquez

Jack* & Darlene
Rosenmeier

Robert J. Rosepink ■

Susan & Robert Roth

Rowlands-Cox
Construction

Jeanne & Robert Rozek

Jack* & Kathryn Rubin

Anne & Stanley
Rulapaugh

Rum Runner's Bar

Garth* & Dee Saager

Dr. Adam & Chantelle
Sabbath ■

St. Mary's Food Bank

Cheryl Sandeen

Sanderson Ford

Dr. & Mrs. Joseph
Sandor

Sanofi

Lori-Ann & Scott Satran ■

Dewey D. Schade

Amy & Mark Schiavoni

Vince & Janet Schifano
and Family

Sophann & Tom
Schleifer

Carl* & Carole
Schmieder

The Robert E. Schneider
Foundation

Jeffrey* & Ingrid
Schomaker

Kate* & Howell Schorr

Schuff Steel

Ford* & Susan
Schumann

Tracy & Marc
Schwimmer

Scottsdale Perinatal
Associates

Scottsdale Physicians
Group

Scottsdale Unified
School District

Donald Seeley &
Judith Doing

Mary & Stanley Seidler

Donna Sells ■

Sentry Insurance

Shadow Rock United
Church of Christ

Dr. Deepa Shah &
Mr. Nihaal Rao ■

Joanna & Samuel
Shames

Mrs. Merle Shapiro

Dr. Christopher &
Victoria Shearer

George F. Sheer & Jane
Evans Sheer Family

Shetler & Associates LLC

Dr. Brian Sidoti & Dr.
Jacqueline Olmert ■

SightCare

Dr. Frank & Margery
Simchak

Drs. John & Armity
Simon

Frederick S. Simonie, MD

Dr. Mark Slater & Dr.
Annie Weickgenant ■

Slattery Petersen PLLC

Curt Smith & Mary H.
Cummins

Dr. Harvey Smith*
& Dr. Dorothy Lincoln-Smith

Joanne M. Smith ■

Mr. & Mrs. Oliver L. Smith, Jr.

Sergei Snegireff* & Sandi Lucas-Snegireff

Marianne & Dr. Kurt Solem

Sons of Arizona

Dr. & Mrs. Sergio Sotelo

Southwest Gas Corporation

Sovereign Healthcare

Evelyn J. Sowell

Joe & Pam Sparks

Dr. Diane Spieker

Cindy & Lorand Spyers-Duran

Cheryl & Randy Stabler

Drs. Beatriz & Michael Stamps

Standard Pacific Homes

The Stanley Family

Gregory & Dolores Steinbis

Mr. & Mrs. Thomas A. Stephen

Joseph* & Rosamond Stern

Debra & Christopher Stevens ■

Ashley & Luke Stewart

Stifel

Stryker Medical

Michelle Stuhl & Howard Werner

Christine & John Suppes

Barb & Lloyd Swift

Glenn* & May Tansley

Patti Taylor

Susan T. Taylor

Team Select Home Care

TGR Solutions

Cheri & Gene Thomas

Rita & Peter Thomas

Faron & Kristie Thompson

James* & Marian H. Thornton

Drs. Maya & Amar Thosani ■

Thunderbird High School

Jean Tichenor

Tiffany & Co.

Cornita & Anthony Tilma

Dr. Francis & Heather Tindall

Kathryn & Wes Topping

Trace3

Tim Tracy

Garth* & Darleen Treude

Donna & Ty Triplett

Troon Golf and Country Club

Linda & Mark Truitt

Trueman* & Joan Tryhus

The Turner Family Charitable Trust - Melissa A. Turner & R. Bradford Turner

Roderick & Terry Turner

Legacy Foundation - R Bradford & Elisin Turner

UMB Bank Arizona

United Healthcare of Arizona

University of California, San Francisco

University of Miami

Van Denburgh Foundation

Velocity Cabling & Network Solutions

Ventas Realty Limited Partnership

Viad Corp

Betsy Vincent & Norm LaZar

Lara & Scott Vineyard

Hollis & Christopher Volk

Edward J.* & Patricia Ann Walsh

Jerry* & Eileen Ward

Dr. & Mrs. John A. D. Ward

Bubba & Angie Watson

Jennifer & Russell Weisman

Mary* & Robert Wells

Wholesale Floors

Keith & Florence Wibel

James Wiesenber

James Williams & Jan Haedicke

Mr. & Mrs. Alexander Wilson

David J. & Mary Ann Winter

Drs. Barbara Prah-Wix & Mark Wix ■

Women's Institute for Secure Retirement

Bernale* & Dr. Richard Wright

Julie A. Wrigley Foundation

Wyeth-Ayerst Pharmaceuticals

Xenex Disinfection Services

Steven & Janice Yee

Yokohama Tire Corporation

Denise & Stephen Zabilski

Deedra & Jerry Zabokrtsky ■

Kathi & Kenneth Zarubi ■

The Zell Family Foundation

Dan* & Cindi Zinda

Louise & David Zirretta

Sheila & Michael Zuieback

Anonymous (14)

FRIENDS OF THE FOUNDATION PLATINUM SOCIETY

*In recognition of gifts of
\$15,000 or more in 2024*

ACIST Medical Systems

Lynda Blanchard

Challenge for Charity Inc.

Crush Sports, LLC

Grayhawk Golf Club

HeartFlow

Laffey-McHugh Foundation

Life Masters Classes LLC

Mega Machinery, Inc.

Southwest Teepee and Event Rental

Thompson/McCarthy Coffee Co.



SCAN QR CODE
Visit our website to see
Friends of the Foundation
Silver and Gold Honor Roll.

LEGACIES OF *Distinction*

*Celebrating the legacy you
are creating for HonorHealth*

With sincere gratitude to those who have documented a donation to
HonorHealth through their will or estate plan.

Ray D. Agostino
Katharine & Wayne Akin
Diedre Alexander &
Alexx Stuart
Arnold Alpert
Dave & Louise Arnt
Lynn M. Badura
Alice L. Bailey
Ruth & Hartley Barker
Mr. & Mrs. Lewis
Barnard, Jr.
Virginia L. Bayless
Deborah & David L. Bean
Charles A. Becker
Rita Belle
Judi & Paul Bennett
John Benzel
L. Harry Bergman
Harold E. & Lola Beyer
Elizabeth Biaett &
Gary Dickey
Nancy & Charles
Bivenour
Claire & Herman Blum
Alice M. Bogert
Anne L. & Walter E. Bohl
Andrew & Lynn Bohrsen

Veronica Bonnie
Dr. Charles T. &
Sandra J. Bonstelle
Bob Bové
Donna Q. &
Thomas E. Brady
Arthur & Carol Brandon
Barbara Ann Brasted
The John Breen Family
Kathleen & Kile Brewer
Rosina Bria
Evelyn G. Brockway
Dr. Karen A. Brown
Laurie & Drew Brown
Carol Budrow &
Rubin Shapiro
Edward B. Burr
Bev Burroughs &
Jeff Jakus
Susie & Spiro Cakos
Paul Calderon & Mary
Crawford
Liz & Lou Calligaro
Carol M. H. Campbell
Melvin & Carol Carro
David Carroll &
Judy Warnock
Bill Cassidy &
Leslie Griffeth

Mr. & Mrs. Charles P.
Cattaneo
Linda & Michael J.
Christensen
Keith & Elaine Christian
Catherine N. Church
Natalie Brisco Clapp
Elva S. & Robert H. Clark
Ira Clark & Diane L.
Brooks
Joseph T. Clees
Cleora V. Coates
Paula & Dan Coleman
Rhoda Cookson
Robert & Mary Cornell
Ruth & Ray Cowden
Mr. & Mrs. Ben W.
Cowles
Flora Coyle
Mr. & Mrs. Ambrose
Cramer
Carol Critchfield
Tom & Mary Lynn
Crowley
Roberta &
Frank Cummins
Mirjana R. Curtis, MD
Mrs. A. P. Dailey

John & Patty Dean
Ann & Ralph Del Santo
Joseph Dietrich
Michael J. &
Carol M. Dillon
Benjamin P. Douglass
Diana V. Douglass
H. James Douglass
Karen K. Dugger
Kimberly Dunn
Anne & Dennis Eardley
Rhoda P. Eisenberg
Pat & Randy Elder
Irene Elgart &
Mickey Moore
Jack Eliscu
Susan & Carter Emerson
Dr. Jay & Dee Epstein
Janet & Jerry EtsHokin
Diane & Steve Farrar
Trish & John Ferree
Mr. John Fick &
Dr. Catherine Klinger
Caryl V. Foley Fitzgerald
Maurine M. &
Alvin A. Floss
Margaret F. Francis
Dr. & Mrs. Denis J. Frank

David L. & Cathy D.
Freedman
Charles & Helen
Friedman
Iris Frieling
Helen R. Fullerton
Richard C. & Ann Funk
Margaret P. Gale
John R. Galvin
Michael & Sheila
Geddes
Sheila & Richard Gerry
Robert & Linda
Glassman
Charles E. Goetz
June L. Goldman
Mary Lou O'Brien
Goldstein &
Melvin M. Goldstein
Susan B. &
Neil Goldstein
Earl G. Gomulka
Dr. & Mrs. Bradley
Gordon
Govig & Associates
James & Deborah
Graber
Laura & Dayton F.
Grafman
Alfred & Martha Gram
Marie Titus Grimm
Marion & Charlie Grimm
Gerald J. Guillory
Barbara & Bradley
Hansen
Gene & Gloria Harper
Willard P. &
Sheila F. Harris
Kate & Paige
Heavey-Seastone
John & Carol
Henderson
Ray & Anne Henning
Ruth M. Henry
Elizabeth &
John Hessler
Fred Hessler &
Kathie Mundy
Ellen Day Higgins
Doris J. Hill
June & Robert Hine
Vladimir F. Hladik
Edie & Bill Hodge
Jenny G. &
Irvin M. Hoffman
Marjorie Hoffman
Harold & Josephine

Hogan
 Ruth Hoover
 Blanche S. &
 A. Garner House
 Lila & John Howard
 Susan & Brian Hughes
 Virginia Emery Hull
 Matthew & Suzanne
 Hummel
 Helen J. &
 Jack B. Huntress
 Millie & Jene Jacoby
 Dolf & Diane Jakobs
 Helen & Ted Jaros
 Dorothy T. Jasinski
 Herbert H. Jennison
 Kirk & Judi Johansen
 Gregg & Carol Johnson
 Rebecca & Kelly
 Johnson
 Thomas F. Jones, Jr.
 Joe Karowski, Jr. &
 Gloria J. Karowski
 Wolfgang & Rosa Maria
 Kayser
 John & June Kearney
 Gloria P. Keeti
 Margery D. Keller
 William C. Kelly
 Jerry Ketelhut, Jr.
 Greg & April Kilfoyle
 Golda O. King
 Owena King
 Dan A. Klingenberg
 Susan & Gary Knopp
 Melissa Kowalewski
 Daniel & Linda Kramer
 Jess & Virginia Kravitz
 Nancy S. La Pierre
 Richard & Frances
 Lamden
 Allen Landers
 Todd & Kelly LaPorte
 Ethel S. Larson
 Bill & Beverly Lavin
 Robert & Adelyn
 Leander
 Terry & Sara Lee
 Gregg & Laurie Lien
 Monique Lightner
 Elizabeth &
 James Lincoln
 Helen & John C. Lincoln
 Joan & David Lincoln
 William F. Linton
 Annelise Loeser

William J. Lofy
 Roman Lopatynski
 & Cindy Litterer
 Lopatynski
 Lucile & Ralph Love
 Joelle Lummis
 Rachel Lyman
 Millicent Mann
 Marguerite Marshall
 Maxine & Jonathan
 Marshall
 A. J. Martin
 Leonora Wolf Martin
 Vincent Matousek
 Tim & Alison McAdam
 Elinor & Ralph McBride
 Pat & Terri McCarthy
 Lori McClelland &
 Michael Harris
 Pollie A. & Jack O.
 McFarland
 Thomas J. McGinnis
 T. Troy McNemar
 Genieva Meadows &
 W. M. Lane
 Jan & Frank Miller
 Henry & Ardis
 Mohrschladt
 Dr. Frederick Monteser
 Karen Morrissey
 Dave Mortensen &
 Susan Levy
 Jill & Rob Muth
 Patricia & Bill Naumann
 Jerry & Florence Nelson
 Dr. Kris & Steve Nelson
 Elyse & Bill Newton
 Ann & Richard Niewold
 Dr. Norma G. Norriss &
 Mr. A. Harold Norriss
 Gail Ntiappiah
 Arlene & Jack Nygren
 Marjorie W. O'Connell
 Beverly A. Oglesby
 Catherine M. & Douglas
 E. Olesen
 Jan & Stephen O'Neill
 Eugene O'Sullivan, Jr.
 Kenneth W. Oswald
 Alice Palmer
 Madelene M. Palmquist
 Jack & Elaine Parker
 Nitin (Nick) Patel, Esq.
 George Patterson
 Diana & Peter Paulsen
 Mr. & Mrs. Ralph S. Penn

Helen Pezdirtz
 Barbara Pickrell
 John William & Valerie
 L. Pihl
 Virginia G. Piper
 Gertrude L. Platt
 George W. Podd
 Judith & Max Poll
 Kate & A.J. Pollock
 Patty & Joe Porter
 Rex & Margie Porter
 Dr. W. Brian & Sharla
 Ann Powley
 Andrea Price
 Dr. William &
 Sydelle Price
 Mr. & Mrs. Howard A.
 Prior
 Janet & Frank Pugh
 Debbie & Les Raatz
 Pete & Lorelei Redding
 Peggy Reed
 Evelyn M. & Damon B.
 Reeder
 The Keith & Kelley
 Reese Family
 Jean L. Reinhardt
 Mr. & Mrs. John A
 Rishel, Jr.
 Marian & Jewell E.
 Robbins
 Marian H. Rochelle
 Mrs. Clarence
 Roeming, Jr.
 Albert & Claudette
 Romano
 Dr. Magdalena
 Romanska
 William W. Rooke &
 Gladly Green
 Harriet & Harold
 Rutchick
 Garth & Dee Saager
 Lt. Gen. Frank J.
 Sackton
 Howard & Jill Sadkin
 Tom & Mary Sadvary
 Ron "Saff" Saffer
 Nancy & William
 Sampson
 Rockland & Virginia
 Saunders
 Judy & William C.
 Schaefer
 Robert M. Schafer
 Dr. & Mrs. James
 Schamadan

Vince & Janet Schifano
 Max M. & Marie A.
 Schirtzinger
 Carole & Carl
 Schmieder
 Nancy & Phil Schneider
 Elizabeth Schrader
 Barbara J. Scrivner
 Betsy Scrivner
 Jean & Dick Segil
 Evelyn & Charles Severy
 Alan R. Sewell
 Steve J. Shain
 Col. & Mrs. A. Park
 Shaw, Jr.
 George F. Sheer & Jane
 Evans Sheer Family
 Ann Shideler
 Serena & Eli Shtabsky
 Arthur N. & Laura A.
 Sieburg
 Mr. & Mrs. Herman
 Siegel
 Patricia Dickinson
 Simmons
 Robert L. Sinclair
 Mary & Lee H. Slater
 Joanne M. Smith
 Joe & Madonna Smyth
 Dr. Bertram &
 Edna Snyder
 Evelyn Sowell
 Michelle & Craig Steen
 Winifred M. & Herman
 O. Steinke
 Rosamond &
 Joseph Stern
 Becky Curtis Stevens
 Virginia G. Stewart
 Alice & Ralph M. Stivers
 Anna Louise &
 Robert Stout
 Mr. & Mrs. Ralph Straus
 Carolyn & John Stuart
 Shireen Malouf Stuart
 Michel A. Sucher, MD
 Grace B. Sullivan
 ShirleyAnn & Raymond
 Sullivan
 Emily Sutton
 Mr. & Mrs. F. C. Swain
 Robert Swayne
 Ruby & E. C. Sweet
 Barb & Lloyd Swift
 Maurice Tatelman, M.D.
 Elsa Taylor

Linda & Bob Teal
 Nancy J. Templin
 Gene H. & Cheri L.
 Thomas
 Annette J. Thornton
 Dorothy Totten
 Sandy & Frank Trznadel
 Gary & LuVerne
 Underhill
 Evelyn H. & H. W. "Bill"
 Van Loo
 Mrs. Robert E. Vance
 Mr. & Mrs. Oliver
 Goldsmith Vinnedge
 Ann & Carlos Wagner
 Lester A. Walker
 Frank A. & Sara Jane
 Wasilewski
 Kenneth & Marjorie
 Watters
 Anna Weinold
 Jim Wells
 Linda & Bill Werner
 Sandy & Lou Werner
 Keith Wetzel & Suzanne
 Painter
 Mr. & Mrs. Steven
 Wheeler
 Dr. Paul & Cecile
 D. Whitaker
 Keith & Florence Wibel
 Marjorie Will
 Robert W. Willacker
 Don E. Williams
 Mr. & Mrs. Robert A.
 Williams, Jr.
 David J. & Mary Ann
 Winter
 F. Keith & Patricia A.
 Withycombe
 Dr. Judith G. Wolf
 D. Ronald &
 Joan Yagoda
 Dr. & Mrs. H. W.
 Yamanouchi
 Richard & Patricia Yates
 Pat & Barry Yellen
 William G. Young
 Kathy Zeblicky
 Glenn A. Zellmer
 Louise & David Zirretta
 The Ziska Family
 Marlene & Lee Zuker
 Anonymous (38)



Circle of Distinction

Every donor whose cumulative support reaches or surpasses \$25,000 dollars is welcomed into the Circle of Distinction donor recognition society for life. Our distinctive donors enjoyed the society's annual dinner, especially with this year's Amalfi Coast theme. Cocktails and conversation started the night, followed by dinner and a presentation by Jim Whitfill, MD, and Mia Chorney, DNP, on advances in technology and care innovations at HonorHealth.



Legacies of Distinction

Our annual Legacies of Distinction gathering celebrates our donors who have made provisions for HonorHealth Foundation in their will or estate plan. At the most recent brunch, hosted at El Chorro, our guests learned about HonorHealth Cancer Care. Christopher Biggs, MD, medical director, is supporting the Foundation's cancer campaign with a gift of his own and a challenge to his fellow physicians. We were also joined by Mary Ann Winter who shared her late father's generosity and involvement in the Foundation.





Emeriti Spring Summit

For those who have served on the HonorHealth Board of Directors or the Foundation’s Board of Trustees, the role of emeriti is much more than ceremonial. Each year, Todd LaPorte and Jared Langkilde gather these leaders at the Emeriti Spring Summit for lunch state and a “state of the hospital” discussion.



Healthcare Transformation Council

Exclusively for donors who have gifted \$1 million or greater, the Foundation’s Healthcare Transformation Council provides these changemakers with unique experiences alongside HonorHealth leadership. This year, the Council visited the new HonorHealth/CDW Transformation Center, a technology playground that allows HonorHealth to try out solutions to healthcare challenges, keeping only the ones with the greatest potential, then move through a progression of increased testing and evaluation in a simulation environment. The transformation center was made possible through a significant gift from CDW, an international technology solutions provider.



GIFTS *In Memory*

Your memorial gift carries deep meaning for loved ones

**A canine companion
and friend**

Corinne M. Faiella

Robert B. Ackerman

Esther J. Ackerman

Joyce Adams

Roger L. Adams

Diedre Alexander

Bradley W. Corrion

Rebecca Diederich

Paul Imlej

James C. McDonald

**All my loved ones in
heaven**

Heidi R. Lang

Mojo & Dixie Allen

Richard Allen

Dolores Alvarez

Dolores M. Steinbis

Laird Anderson, Jr.

Kathleen Anderson

**Lauren "Doone"
Anderson**

Alan Anderson

Michele I. Anderson

Ruth Anderson

Gregory Benjamin

Steven Bogart

Jennifer M. Bradshaw

Jazmin Diaz

Shefali D. Kubavat

Ashleigh G. Leite

Candace Lew

Karl Overman

Terri Perillo

Cynthia Porter

Edward S. Roseman

Nancy J. Schultz

Carrie Siegel-Benell

Jennifer L. Stackhouse

Debra J. Stevens

Lynn Tindall

Mia A. Weinert

Tracy Wight

Julie A. Aswad

Melissa Aswad

Glen Roy Baker

Stephen Barnett

Mary L. Coleman

Gail A. Creasman

Jeanne R. Davis

Shae L. Dixon

Sallie McCutcheon

Susan M. Melker

Jack N. Poles

Janet M. Spasiano

Kathy A. Zeblisky

Tracy Barnes

Cheryl L. Dickey-

Montoya

Mary Elizabeth Bartel

Thomas J. Bartel

Mary Bartholomew

Beisser Trust

Edward Tee Baur

Harry Agress

Letah H. Carruthers

Carol C. Costigan

Robert J. Currey

Terry S. Dunaway

Fred M. Luth & Sons,
Inc.

Richard P. Goodman

Jan Gordon

Nancy S. Gulick

Susan R. Hall

F. Borden Hanes

Sonya W. Helmkamp

Toomas J. Kuk

Jay Marshall

Charles N. McAlpin

Rozanne B. McCotter

Misty M. Meyer

Cynthia S. Peters

Robert W. Riordan

John M. Rivers

Ann Scott

Jane & Edward

Simmons III

Leslie A. Simpson

Micah Tepper

Pete Wilson

Laura Faye Beisser

Benoit D. Beisser

Beisser Lumber
Community Fund

Beisser Trust

James R. Hladik

Teresa L. Keith

Connie L. Lyon

Darlene D. Mashek

Debra L. Norton

Michael C. Pryor

**Charles Edward
Benerofe**

Joyce Lippincott

Bette

Annie Mitt

Upen Bharwada

Patricia A. Bharwada

Scott Bizjak

Jolynne Bizjak-Andrias

**Thomas M. Blanchard
Jr.**

Lynda P. Blanchard

Mary "Terry" Bollinger

Jeanne K. O'Connor

Paul Sieczkowski

Bob Burke

Valerie J. Ettinger

Cancer Care Patients

Shane R. Waddell

Stephen M. Canham

Mark S. Clark

Pamela Matiovics

Gina Rocha

Sarah Skebba

David R. Staven

David Stearns

**Joseph William
Cannon**

Patricia Craig

Patrick Flint

Sarah B. Gladden

John Schlichting

Kate & Sal Cantelme

Patrick E. Cantelme

Shaun D. Cantrell

Mary A. Merkel

Nicholas Caputo

Christina J. Caputo

Janet B. Carpenter

Peter R. Carpenter

Everett B. Chamberlain

Beverly Chamberlain

Elena Chavez

Richard A. Chavez

John Cherepovich

Sandra L. Hicks

Karen Esther Woods Cherrill

David A. Cherrill

Norma "Nana" Clarke

Celeste & Eric Silvernail

Robert D. Cleland

Teresa L. Cleland

Jerry B. Coffman

Marilyn A. Coffman

James P. CohenCarl and Rene Cohen
Foundation**Shirley Cohen**

Ellen & Peter Fradin

Sharron A. Cooper

Wesley L. Cooper

Kenny Corbitt

Kelley R. Reese

Dr. John J. Corrigan

Heidi L. Dwigun

Michael Jedidiah Cox

Sandra Cox

Wave Dean

Carmel Dean

Vernon Dedisse

MaryRuth Dedisse

Wanda Diane Delich

Jay K. Delich

Lyon Clark DeWitt

Janell DeWitt-Stacy

Josephine Dix

Pamela A. Dix

Herbert Dixon

Valerie J. Ettinger

Sheri & Randy Dixon

Valerie J. Ettinger

Dozer

Michael Sherman

Dr. George Drake

Edward I. Marsh

Bruce Gill DutcherSteven Crowley
Jennifer P. Richardson
Benedict Smith**Ronald Boyd Dwight**

Cheryl A. Kaltenbach

Clayton Dyett

Valerie J. Ettinger

Dennis R. Eardley

Anne L. McCain Eardley

Paul EdwardsPacific Standard
Specialties Inc**Robert Elder**

Pat & Randy Elder

Wilma Elder

Pat & Randy Elder

Sprout Elkin**Myra Elkin****Alan A. Elkins**Lori Feil
Mary Hammond
Lisa Iacono
Nicole L. Iacono
Laurie Penn-Moyer
Deborah M.
Rittenhouse**JoAnn Emch**

Darsie Emch

James Erickson

Patricia B. Erickson

Linda Farrington

Carla R. Frederick

Clyde & Helen Fawcett

Peggy J. Fawcett

Esme Bianca Fekety

Michele Worth

Finley

Kimberly Helsper

Charlee Lynn Foor

Michelle Dent

Tanner Rae Foor

Michelle Dent

Fred Forino

Marion J. Forino

Dr. Gary David FrankKaren Alvarez
Matthew Brady
Heather Ellison
Brian Frank
Lawrence Frank
Michael Freedman
Cecilia Garcia
Magdalene D. Haggerty
Karen M. Hanrahan
Richard Kornmeyer
Russell Lee
Curtis Maas
Isaac Martin
Gary Molyneaux
Karen C. Pack
Lori S. Serpico
Nancy E. Sippe
Lynda F. Venters
Michael S. Weng**Nancy and Gary Frazier**

Cynthia S. DiSanto

Jerry Frieling

Iris D. Frieling

Belinda Payne FrohlingR. S. Hoyt Jr. Family
Foundation**Frank "Bubba" Fuerte**

Veronica G. Fuerte

Rick GarciaAlliance Safety LLC
Buehler Engineering
Inc.
Karen L. DeWitt
Jacobsen Construction
Company, Inc.**Patricia Gates**

Christy Smigielski

Molly Hull Gavette

Russell W. Gavette

Mary Geffre

Mary C. Smith

Paul Geffre

Mary C. Smith

Linda GeorgeJoan C. Mitrius
Daniel Sheehan
Cindy Maher**Megan Geronimi**

Heather A. Powis

Sheila GerryDan C. Coleman
Richard Gerry
Meredith Langer**Barry Goldman**

Valerie J. Ettinger

Gary Goodman

Anne M. McNamara

John V. Gosule

Mary D. Gosule

Gail Paoli Greene

William M. Greene

Ruth Groppe

Megan Perry

Daniel Grossman

Mike Lovell

Verla Flo Habighorst

Laurel Crawford

RBH

Alexis Hale

HannahKaren Morrissey & Jerry
Graver**Maryl Hatwan**

Barbara J. Vasquez

Suzanne P. Haugland

Marilyn Pappas

Marjorie (Margie) Hawking

Josefa Moreno

Carl L. Haynes

Rex L. Porter

Carol Busath Heap

David N. Heap

Florence Hefner

Patricia Carleton

Don Heil

Lisa Laidlaw

Judy Hendricks

John Hendricks

Kandice Herring

Richard Vandercook

Barbara Hershey

Iris Schubert

Mark Stevenson Hines

Rozanne B. McCotter

Rebecca Hinkle

Jacqueline Gaus

Zelma Horwitz

Phillip Horwitz

Adelene & John Hubbs

Karen A. Morrissey

Susan C. Hughes

Brian P. Hughes

Thomas C. Hullverson

Michael D. Greenbaum

Delmas G. Hutchinson M.D

Susan K. Vance

Evelyn Hutchinson

Susan K. Vance

Charlie Joe & Pierre Edmund

Annette Isbrandt

Patricia James

Debbie Gallegos

James G. JanssenSusan Janssen-
Glidewell**Jesus Christ**

Ethan Shim

Julie J. Johannsen

Brent Jensen

Curtis D. Johnson

Brianna Hiltz

Jordan Kammrath

Dan P. Kammrath

June Kearney

John M. Kearney

Marty Kenney

Katherine K. Johnson

Leonard C. Kestenbaum

Marianne Kestenbaum

Marilyn J. Kevern

Ronald B. Kevern

Lynn Kieffer

Nancy S. Behling

Daniel B. King II

Rita King

Helena L. King

Golda O. King

Bruce N. KlineDebbie Cattalini
Brita Jenquin
Gilbert R. Jersey
Leslie M. Kammerer
Nan R. Ponting
Betty Scharfman
Constance L.
Whitmarsh**Alice Tateosian Koenig**

Penny A. Koenig

Gifts In Memory

In recognition of gifts received
through December 31, 2024

Judith Krebs

Kenneth T. Krebs

Emanuel Ladson, Jr.

Erika Ladson

David Lamparter

Alaina Chabrier
Carole Collier
Jarolyn J. Davis
Sydney Gray
Wendy Henry
Martha J. Morrison
William Novotny
John Stanley
Kathleen R. Wade
Judith Wentworth

Rocky Landato

Lizbeth L. Patterson

Barbara Lee Larson

John R. Dillon
James P. Larson

Elayne & Herbert Laufman

Andrea S. Laufman

Ruth Lavinia

Robert Lavinia
Thomas E. Schildgen

Diana Leeds

Ronald H. Leeds

Ruth LeFlore

Richard A. Chavez

Craig Lentz

Debra L. Norton

Orme Lewis, Jr.

Linda Breuer
Eric King
Jennifer E. Sands
Hillary Style
Mary Westheimer
Anonymous

Jen Lewton

Cindy Lewton

Michael Liber

Sandra Shulak

Bruce Lieberman

Judith F. Brandeis
Robbin Lieberman

Philip Lille

Patricia G. Lille

Zachary P. Lipof

Howard Hope's LLC

Loki, Shiloh & Lady

Kara L. Cummings

Michael Valentino Lucas

Lawrence E. Lucas

David Ludwig

Dawn M. Bassett

Linda Lundstrom

Burke A. Kron

Marie Mahmarian

Charles Mahmarian

Marsha Faye Martin

Laura A. Hollister

Patricia Martin

William D. and Joyce
E. Sexton Family
Foundation

Emry Sylvia Mathews

Joby Mathews

Max

Sarah M. Anderson

Ron G. McFadden

Margery H. Porter

Jerry Meyer's brother Jim

Valerie J. Ettinger

Bobbie Mills

Linda M. Comeau

Caroline H. Mills

Darlene Mills

Doris Minsker

Lynda J. Horlick

Mom

Linda C. Schulz

Mom & Dad

Mark Lavoy

McKenna Moreno

Edward C. Gile

My dad & Chase

Jason H. Jacoby

My mom

Lynn Swanson

Carolyn G. & Herb Nathan

Stephen P. Nathan

Jonnie Gaye Nuzzi

Catelynn Gibson

James O'Brien

Linda J. Gabriel

Hermanda O'Connor

Meg Seoane

Myles & Hermanda O'Connor

Susan Cronin
Meg Seoane

Susie Oldenbittel

Dennis Morton

Cory Olsen

Mara Goebel

Our loved ones

Susan Shultz

Bertha Rose Parker

Cherie L. Schooley

Joanne Pedersen

Valerie J. Ettinger

Beverly Jean Peterson

Elizabeth Zimmerman

Dr. Savas Petrides

Gary Courtney
Richard Courtney
Mitzi R. Krockover
Sarah Lefler
Suzanne Lostaunau
Lubin-Lorsch Family
Bruce & Pamela Meyer
Petrides Switsky Family
Richard J. Rom
Neil Switsky
Barbara L. Traum

Susan Marie Petruso

Kenneth W. Player

Pamela K. Philips

John C. Philips

Errol Joseph Pinto

Lakshmi Chiabella

Hilda Pipes

Georgette P. Knoebel

Linda J. Price

Dominique Fisher

Mary Ann Principali

Deborah L. Bertini

Frederick B. Rentschler

Frederick B & Pamela A
Rentschler Foundation

Sharon Ritt

Judith A. Feldman

Stella Robinson

Braden Bach

Agnes E. Rodriguez

Linda Sanora

Roberta Romano

Richard Romano

Dominic Romeo

Marlene J. Hartnell-
Miller

Brian Rooney

The AzDA Cares
Foundation

Eileen Rubenstein

Greg D. Rubenstein

Marilyn S. Rubin

Sandra Goldenberg
Nelanie Roth

Barbara Ruguone

Catherine Sweeney

Marty Ryan

Richard E. Ryan

Garth E. Saager

Delores K. Saager

Charles A. Saletta

Anne Saletta

Naomi Schade

Maribeth A. Schade

Elizabeth Ann Schrader

Richard H. Bullard

Barbara Severson

Arcadia Technical Sales,
LLC
Marcella Cronenberg
Oscar T. Lenning
Sheri Robertson
David & Diane Schwan
Ronnie L. Severson
Cheryl Vieth

Georgianna Sexton

William D. and Joyce
E. Sexton Family
Foundation
Margaret Shelton
Kathleen Anderson

Pat Shurtleff

Melinda Judd

Barbara Sigel

Valerie J. Ettinger

Michael A. Signa, Jr.

Pat & Randy Elder
Anonymous

Sir Tobert Ulysses Dragonslayer

Anna M. Richards

Linda Carol Slater

Lynn Mills

Marilyn Small

Leslie A. Small

Carolyn Jean Sol

Raymond Sol
Tai Chi Body Balance
LLC

Rita Spencer

Dolores M. Steinbis

Jan Stache

Michael L. Stache

John W. Stahl

Carolann T. Facenda

Oliver Stoutland

LuVerne Underhill

Renee Straface

Kelsey J. Difiore

Barry Stratford

Sandra S. Stratford

Harold M. Sucher

Yitzhak Ben-Zvi

Janet Sucher

Yitzhak Ben-Zvi

Archie D. Swaine

Karen A. Swaine

Joseph S. Swiatek

Helen S. Swiatek

Sedona

Janet Taylor

Jean Thomas

John E. Thomas

Nancy Tiedje

Robert W. Bertrand

Donald J. Ulrich

Sharon J. Ulrich

Harriet Vacca

Anthony V. Vacca

Richard A. Van Arsdale

Michael D. Greenbaum

Karen R. VanaskieDaniel Walton, DO,
PLLC**Lawrence F. Waldman**

Patricia J. Waldman

Judy Ward

Barbara A. O'Keeffe

Mary A. Weil

Michael D. Greenbaum

Jim White

Dena M. White

Dr. Robert E. White, Jr.

Michael D. Greenbaum

**Sandra Chan
Whitehouse**

George S. Whitehouse

Susan Wiesenber

James Wiesenber

Kathy Wiggins

Valerie J. Ettinger

Isabella Donna Wik

Paul F. Binsfeld

Robert F. Bobo

Julie Breuer

Ernie Brodersen

Louise E. Bunker

Allyson Crooks

Joseph Daval

Sarah Fuller

Nancy Gress

Janet Holmes

Raveena John

Lindsay F. Krehbiel

William R. Kuykendall

Ryan C. Mead

Jessica M. Silva

Susan Thomas

Nancy Wik

Thomas Wik

Rhyme Williams

Joyce S. Paye

Winnie

Stephanie Schneck

Bruce Wynn

Bellinda Blumenthal

Norman York

Ronald Lipof

David Zaleski

Valerie J. Ettinger

Phil Zeblisky

Devany Dellis

Linda J. Gabriel

Carolyn Grote

Dawn Olson

Theresa E. Petaja

Janice Schachter

Mark Zudekoff

Robin J. Zudekoff

Joann Zungailo

Kathleen M. Miller

**HONORING A LIFE****LIVED IN SERVICE TO OTHERS***Robert Charles Bové***1941-2024**

In March of 2024, we learned of the passing of our remarkable friend and benefactor, Bob Bové, whose philanthropic spirit illuminated the lives of thousands and transformed the landscape of healthcare in our community.

From his early successes as an astute business leader to his unwavering commitment to giving back, Bob's life was a testament to the power of compassion and foresight.

Bob's journey with HonorHealth began in 2009 with a humble gift to the Osborn campus. Over the years, his involvement and generosity blossomed, fueled by gratitude and a deep sense of purpose.

In 2020, Bob made a transformative commitment to create the Bob Bové Neuroscience Institute, a beacon of hope for patients and families that is advancing care and paving the way for groundbreaking innovations in the neurosciences. His investment through HonorHealth Foundation represents the single largest philanthropic commitment from an individual in our organization's history, leaving an indelible mark on the future of healthcare for our community.

In gratitude and remembrance, we honor a beloved friend and a philanthropic giant.

*In Honor Of*

2024 gifts that honored an occasion or achievement of someone special are always available on the Foundation website. Scan the QR code with your smart phone or just visit the website at HonorHealthFoundation.org/inhonor

Physician Partners in Philanthropy

With our thanks to the HonorHealth and affiliated providers
who support our Champions Plus program

Allergy/Immunology

Uday K. Reddy, MD
Jodi L. Rubin, MD

Anesthesiology/ Pain Management

Tony Bui, MD
Steven H. Eisenfeld, MD
J. Julian Grove, MD
Sean M. Ormond, MD
Masoud A. Sultani, MD

Audiology

Cathy E. Kurth, AuD
Georgine Ray, AuD

Bariatrics

James M. Swain, MD

Cancer Transplant

Adrienne D. Briggs, MD

Cardiology

Kush Agrawal, MD
Frank A. Bonavita, MD
Robert F. Burke, MD
Gopi Cherukuri, MD
Rebecca C. Chester, MD
Andrew M. Cluckey, MD
Ankur Gupta, MD
Nassim Haddad, MD
Conrad G. Jablonski, MD

Kevin J. Klassen, MD
J. Michael Morgan, MD
Chintan P. Patel, MD
Sheena Prakash, MD
Indraneil Ray, MD
Christina S. Reuss, MD
David G. Rizik, MD
Alexander D.
Robinson, DO
Adam M. Sabbath, MD
Gregory P. Sanders, MD
Victor Sein, DO
Maulik G. Shah, MD
Daniel O. Storch, MD
Wesley A. Tyree, MD
Sirisha Vadali, MD

Cardiothoracic Surgery

Michael P. Caskey, MD
Richad M. Gillespie, MD
Zain I. Khalpey, MD
Chirag B. Patel, MD
Robert D. Riley, MD

Concierge Medicine

Jeffrey J. Baird, MD
John S. Bickle, DO
Carolyn J. Bordinko, MD
Jessica T. Ellsworth, MD
Mahesh Matthews, MD

Zoe L. McMillen, MD
Laurie M. Pozun, DO
Gregory Reser, MD
James W. Steiner, MD
William J. Strohmman, MD
Brett E. Swenson, MD
Justin W. Wight, MD
Susan S. Wilder, MD

Dermatology

Brenda LaTowsky, MD
Gary A. McCracken, MD
Lauren M. Ogrich, MD
Kelly C. Pearson, MD
Anthony J. Petelin, MD
Maya K. Thosani, MD
Aimee M. Two, MD
Anne Walter, MD
Yousif Yonan, MD

Electrophysiology

John F. Beshai, MD
Junaid Bhutto, MD
Rahul N. Doshi, MD
Thomas A. Mattioni, MD
Sushmitha
Patibandla, MD
Ashish G. Sadhu, MD
Mark J. Seifert, MD

Emergency Medicine

Steven J. Lipsky, MD
Douglas J. Smith, MD
Kurt R. Solem, MD

Endocrinology

Andrea Ferenczi, MD
Amir E. Harari, MD

Family Medicine

Dee A. Allred, MD
Paul A. Babey, MD
Jamie L. Beckman, DO
John A. Bigler, DO
Dmitry Bisk, MD
Victoria Cupic, MD
Janelle E.
Donaldson, MD
Christopher L. W.
Finlay, MD
Louis H. Hagler, MD
Heather K.
Harrison, MD
Cynthia L.
Kegowicz, MD
Jeffrey D. Leitner, MD
Steven J. Lugo, MD
Preet G. Mangat, MD
David Medunick, DO
Jean Lee Nelson, DO

Angela E. O'Neil, MD
Tiffany C. Pankow, MD
Michael Ravelo, MD
Kristin J. Shealey, MD
Robert D. Sheeler, MD
Paul W. Sieckmann, MD
Paul J. Sos, MD
Ira H. Ungar, MD
Jennifer L. Vanyo-
Novak, DO

Gastroenterology

Emma J. Castillo, MD
Gavin N. Levinthal, MD
Akshay V. Shah, MD
Rucha M. Shah, MD
Amar J. Thosani, MD
Stuart L. Triester, MD

General Surgery

Albert Amini, MD
Richard J.
Chamberlain, MD
Laura R. Champagne, MD
Samedyar I. Durrani, MD
Peter J. Ferrara, MD
Rick A. Low, MD
Aryan Modasi, MD
Elena S. Sibley, MD
Bianca J. Vazquez, MD

General Surgery/ Breast

Nedra J. Harrison, MD
Noemi M. Sigalove, MD

General Surgery/ ColoRectal

Helen C. Hall, MD
Andrew A. Kassir, MD
Raed F. Tarazi, MD

Geriatric Medicine

Jessica M. Berdeja, MD

Gynecologic Oncology

Arvind N. Bakhru, MD
Mike F. Janicek, MD

Hematology/Oncology

Amir Azadi, MD
David Y. Cho, MD
Brendan F. Curley, DO
Michael S. Gordon, MD
Stephanie P.
Lindauer, MD
Joseph R. Mikhael, MD
Frank Tsai, MD
Daniel D. Von Hoff, MD

Infectious Disease

Aman K. Dalal, MD
Laura K. Schroeder, MD

Integrative Medicine

Farshad Fani
Marvasti, MD

Internal Medicine

Jay S. Friedman, MD
Kenneth F. Horowitz, MD
Douglas M. Lakin, MD
Shital K. Patel, DO
Luis A. Sabatini, MD
Brian T. Sidoti, MD
Richard C. Silver, MD
Brent E. Smoots, MD
Jordana R. Zanger-
Jaffee, MD

Internal Medicine/ Hospitalist

Misty V. Evans, MD
Raad A. Hindosh, MD
Amy L. Lee, MD

Nephrology

David M. Burstein, MD
Donn M. Hogan, MD

Neurology

Damian E.
Berezovsky, MD
Barry A. Hendin, MD
Todd D. Levine, MD
Suraj A. Muley, MD
Jill C. Rau, MD, PhD
Gary N. Reese, MD
Daniel J. Savitt, DO
Luay Shayya, MD
Marisa L. Sosinsky, MD
Harry S. Tamm, MD
Lori Hendin Travis, MD

Neurosurgery

Brian C. Fitzpatrick, MD
Bryan S. Lee, MD
Frederick F. Marciano,
MD, PhD
Nikolay Martirosyan, MD
Rory K.J. Murphy, MD
Mark E.
Oppenlander, MD
Luis M. Tumialan, MD
John E. Wanebo, MD

Obstetrics/Gynecology

Andrew W. Carter, MD
Suzanne B.
Hackenmiller, MD
Alexandra E. Kidd, MD
Brenda A. Martin, MD
Khai Ling Tan, MD
Hannah R. Tilden, DO

Ophthalmology

Ali Ghafouri, MD
Robert H. Gross, MD
Grant W. Heinz, MD
Jonathan J. Levin, MD
Paul M. Petelin Jr., MD
Randall K. Tozer, MD
Raymond J.
Zimmerman, MD

Ophthalmology/ Retina Specialist

J. Shepard Bryan, MD
Sharam Danesh, MD
David T.
Goldenberg, MD

Orthopedic Surgery

Sarim S. Ahmed, MD
David S. Bailie, MD
John K. Bradway, MD
Michael J. Brennan, MD
Sean J. Brimacombe, MD
Judd E. Cummings, MD
Michael S. Domer, MD
J. Tyler Enders, DO
Gregory T.
Evangelista, MD
Perry J. Evangelista, MD
Keith A. Jarbo, MD
Bertrand P. Kaper, MD
Timothy S.
Kavanaugh, MD
Kristen L. Maskala, MD
Cory O. Nelson, MD
Robert Pivec, MD
Matthew W. Russo, MD
Vincent J. Russo, MD
Matthew J. Seidel, MD
Brian L. Shafer, MD
Stefan D. Tarlow, MD
Robert S. Walker, MD
Steven D. Werner, DO

Orthopedic/ Foot & Ankle

David E. Jaffe, MD
David Larson, DPM
John A. Nassar, MD
Nima Sana, DPM
Glenn Silverstein, DPM

Orthopedic/Hand

E. Scott Frankel, MD
Donald C. Sheridan, MD
David A. Thull, MD
Philip To, MD

Orthopedic/Pediatric

Gregory M. Hrasky, MD

Orthopedic/Spine

Michael S. Chang, MD
Edward J. Dohring, MD
Justin S. Field, MD
Paul R. W. Gause, MD
Nima Salari, MD
Robert A. Waldrop, MD
Mark J. Wang, MD
Christopher A.
Yeung, MD

Orthopedic/ Sports Medicine

Ashkan Alkhamisi, MD

Orthopedic/Trauma

Brian H. Miller, MD
Gilbert R. Ortega, MD
Kurtis S. Staples, MD

Otolaryngology

Samuel S. Bailey, MD
Kurt E. Heiland, MD
Janet M. Kaczor, MD
Timothy A. Kelsch, MD
Brian Gun Lee, MD
Christopher L.
Lykins, MD
Jacob P. Ossoff, MD
Farhan Taghizadeh, MD
Jordan S. Weiner, MD

Physical Medicine/ Rehab

Harvinder S.
Deogun, MD
Amber R.
Hennenhoefer, DO
Peter K. Kubitz, DO
Anthony A. Lee, MD
Ronald S. Quang, MD

Plastic Surgery

Pablo A. Prichard, MD
Roni B. Prucz, MD

Podiatry

Kris A. DiNucci, DPM
Albert E. Eulano, DPM
L. David Richer, DPM

Pulmonology

Aditya Gupta, MD
Irfan Khalid, MD
Richard S. Levinson, MD
Kimberly A. Parker, MD
Bridgett A. Ronan, MD
Heemesh D. Seth, DO

Radiation Oncology

Ashley A. Albert, MD
Robert R. Kuske, MD
Steven E. Sckolnik, MD

Radiology

Glenn C. Cook, MD
John K. Crowe, MD
William W. Horsley, MD
Ronald L. Korn, MD, PhD
Rodney S. Owen, MD
Gavin P. Slethaug, MD

Rheumatology

Mark M. Freijat, MD
Matthew J.
Herrmann, MD
Alan H. Mallace, MD
Ramin Sabahi, MD
Nancy D. Sein, DO

Sleep Medicine

Ruchir P. Patel, MD, FACP

Sports Medicine

David G. Carfagno, DO

Urogynecology

Ahmed N. Akl, MD

Urology

Erik E. Alexander, MD
Shawn D. Blick, MD
Ali Borhan, MD
C. Gilberto Brito, MD
Daniel E. Cooper, MD
James A. Daitch, MD
Farzana Faisal, MD
Bernard M. Gburek, MD
Daniel C. Jaffee, M.D.
Mitchell C. Kaye, MD
Robert S. Lipson, MD
Lipika R. McCauley, MD
Stephen H. Ponas, MD
Howard P. Tay, MD
Elizabeth A. Tourville,
MD

Vascular Surgery

Hasan Aldailami, MD
Curtis A. Erickson, MD
Mitri Khoury, MD

Employee Leadership GIVING

Celebrating the HonorHealth employees who gifted \$1,000 or greater in 2024

Chad W. Adams
Sherry A. Addair
Beth A. Anaya
Erik G. Andersen
Michele I. Anderson
Joshua Andrade
Ethelwolda A. Angeles
Alexandra M. Avila
Lynn M. Badura
Susan Balentine
Patricia J. Barney
Susan L. Barrett
Colleen B. Beguin
Bobbi J. Belko
Deanna H. Bell
Cheryl L. Belongie-
Brown
Mayurkumar D.
Bhakta, MD
Michael J. Biegelman
Melissa Blake
Christopher E. Boivin
Erkut H. Borazanci, MD
Claire N. Bowey, MD
Jolene A. Boydston-
Letzler
Jennifer M. Bradshaw
Michael J. Brennan, DO
Sean J. Brimacombe, MD
Christa J. Brothers
Tammi Burns
Kelly Chávez-Allen
Bennie L. Clonts
John Colquist
Paula J. Crawford
Crystal D. De La O
Robert P. De La O
Rahul N. Doshi, MD
Sara M. Earnst
Pat J. Elder
Amy K. Elliott
Jessica T. Ellsworth, MD
Caryn L. Evans
Farshad Fani
Marvasti, MD
Elizabeth J. Farhart

Peter J. Ferrara, MD
Sallie C. Figueroa
Pamela K. Foster
Shannon Fox Fraser
Wayne C. Frangesch
Bonnie C. Frazier
Jay S. Friedman, MD
Courtney J. Frisch
Monica R. Fulk
Lori A. Funke
Patricia D. Gates
Bernard M. Gburek, MD
Sharon D. Gburek, MD
Ashleigh Y. Gerhardt
Colleen D. Giggey
Kathryn T. Gilbert
Richard M. Gillespie, MD
Ronald A. Gingrich II
Narendra Godbole, MD
Michael S. Gordon, MD
Melissa Grant
Jerome J. Grove, MD
Lisa A. Guida
Derek A. Hampshire
Jenifer L. Hendrix
Sandra L. Hering
Susan K. Hoffmeister
Dona J. Hofmeister
Glynn R. Hollis
Justin R. Houlihan
Kerry Howell
Magda M. Humphreys
Helen M. Jackson
Gayle S. Jameson
Sadaf Jamil, DO
Crystelle C. Johnson
Roberta M. Johnson
Jamie-Ann L. Kaalekahi-
Mamac
Bertrand P. Kaper, MD
Rebecca L. Katt
Cynthia L. Kegowicz, MD
Keith C. Kerber
Riana J. Kielly

Rebecca S. Koch
Shefali D. Kubavat
Todd A. LaPorte
Michelle L. Laverman
Ashleigh G. Leite
Bryant Leo
Christine Leo
Benjamin R. Lewis
Dana L. Lindsey
Dora P. Loera
Rick A. Low, MD
Mary H. Luster
David J. Mada
Judith A. Madura
Mary J. Mahoney
Stephanie M. Mahrer
William M. Maloney
Deana L. Manning
Lalit Mansukhani
Sandra D. Marken-
George
Julie A. Martin
Barbara K. Martindale
Kevin J. McCabe
Biyisola J. McDonald
David S. Mendelson, MD
Simon D. Mercado
Norene Miel
Joseph R. Mikhael, MD
Timothy W. Mislan
Michael Mizell
Gwen L. Mizerik
Michael L. Montesa
Lisa E. Montman
Matthew B. Morgan
Dennis G. Morton
Rick K. Murdock
Charlene M. Murray
Laura L. Nauman
John M. Neil, MD
Tiffany M. Nelson, MD
Ruth E. Noe
Charez M. Norris
JoAnn E. Odell
Monica R. Onarheim

Brigitte D. Opara
Paul E. Ophaug
Ruth Oprea
Julie Ott
Linda A. Ott
Michelle C. Pabis
John A. Pamiroyan
Tiffany C. Pankow, MD
Megan E. Pardo
Bina A. Patel
Mehul M. Patel, MD
Sushmitha
Patibandla, MD
Melanie C. Patton, MD
Sara H. Pederson
Francisco Peña, MD
Maureen L. Peña
Tanya M. Perez
Terri Perillo
Robert M. Perry
Diane Peterson
Kerry Placencia
John A. Pope, MD
Mary C. Poquette
Kimberly A. Post
David C. Price
Sara K. Priester
Priya Radhakrishnan, MD
Susan Rathunde
Khari Reed
Karen A. Roddy
Chad M. Rohlf
Victoria L. Romero
Adam M. Sabbath, MD
Kris K. Samaddar, MD
Linda Sanora
Lori-Ann Satran
Maribeth A. Schade
Jo Lynn Schick
Melissa R. Schmidt
Donna J. Sells
Amanda L. Shackelford
Amanda Shah

Deepa K. Shah, MD
Maulik G. Shah, MD
Nina M. Shah, MD
Patricia J. Shannon
Angela M. Sheridan
Donald C. Sheridan, MD
Brian T. Sidoti, MD
Celeste M. Silvernail
Melvin R. Simmons
Robin M. Siverts
Mark A. Slater, PhD
Joanne M. Smith
Mary C. Smith
Jennifer L. Stackhouse
Debra J. Stevens
Maryann Stoltz
Thomas J. Strache
Michel A. Sucher, MD
Douglas W. Sweezer
Rebecca M. Taggart
Farhan Taghizadeh, MD
Kena B. Taylor
Derek L. Thompson, MD
Pamela Thompson
Amar J. Thosani, MD
Maya K. Thosani, MD
Frank Y. Tsai, MD
Lee M. Ugol, MD
Kathy Vaught
Corina Veatch, MD
Joel G. Vignaroli
Joe T. Villa
Daniel D. Von Hoff, MD
Robert A. Waldrop, MD
Matthew E. Walls
John E. Wanebo, MD
Sonja M. Wanebo, MD
Lugh Ward
Richard Warren
James T. Whitfill, MD
Rebecca J. Wiesner
Angela M. Williams
Janet M. Williams
Lynn A. Woodruff
Jason A. Wyssmann
Marguerite L. Yoder
Mark W. Yoder
Pixie L. Zagarrigo
Kathi L. Zarubi
Stephanie Zebehazy
Jeannine M. Ziomek
Robin J. Zudekoff
Eric Zuhlke
Barbara D. Zwiener

OVATION

39



OVATION PAYS TRIBUTE TO DR. BIANCA VAZQUEZ

"With an exhausting schedule, helping streams of patients with thyroid disease, Dr. Bianca Vazquez is there to help. She services the Valley and the Westside, takes occasional Saturday appointments to accommodate patients, speaking Spanish as well as English. I was told there was a 3-month wait for an appointment, until she heard of my complex case. She made time for me in 2 weeks, and I had my surgery 3 weeks later...diligence beyond the norm these days.

The fact that her kind of expertise and service in the thyroid arena isn't prevalent in our community, is huge! I suspect many are like me, so thankful that I found her, and grateful that she saved my life! I had desperately searched the internet after failed thyroid surgeries and improper nuclear medicine treatments with other doctors!

With Dr. Vazquez's thoroughness, she discovered immediately that I am "Radioactive Resistant" (an important detail missed by four prior doctors)! Of course, I want to recommend to the entire community, her diligence, eagerness and expertise in bringing her patients back to health! Among some of her celebrity and distinguished patients are baseball players, politicians and lawyers.

Thyroid problems are on the rise, and finding a highly experienced thyroid surgeon such as Dr. Vazquez is a complimentary addition to the existing hospital services

—Joy M., HonorHealth Patient

HONORHEALTH
Foundation

Ovation

*A way to
applaud your
care team*

**Saying "thank you" to those who
cared for you is easy and hearing
your Ovation makes a world of
difference to our team!**

Submit your own Ovation here:



FINANCIALS

40 years of impact

In 2024, the Foundation celebrated 40 years ... four decades of people like you who have recognized the great need to not only support the lifesaving care at HonorHealth but to help it grow to meet the needs of our community.

Some years bring challenges but we have never lost our stride during adverse conditions. This is the stability philanthropy provides us.

Philanthropy also provides the ability to make big leaps forward - the resources to be the best healthcare system in the southwest, known for quality care and amazing advancements that give people more time for the people and experiences they love.

TOTAL GIVING

In 2024, generous philanthropists gave \$46,928,359 to support HonorHealth. Here is our year by the numbers.

Donor Stats

First-time donors	2,572
Renewal donors	5,432
TOTAL DONORS	8,004

Investments

Rate of return for 2024

10.18%

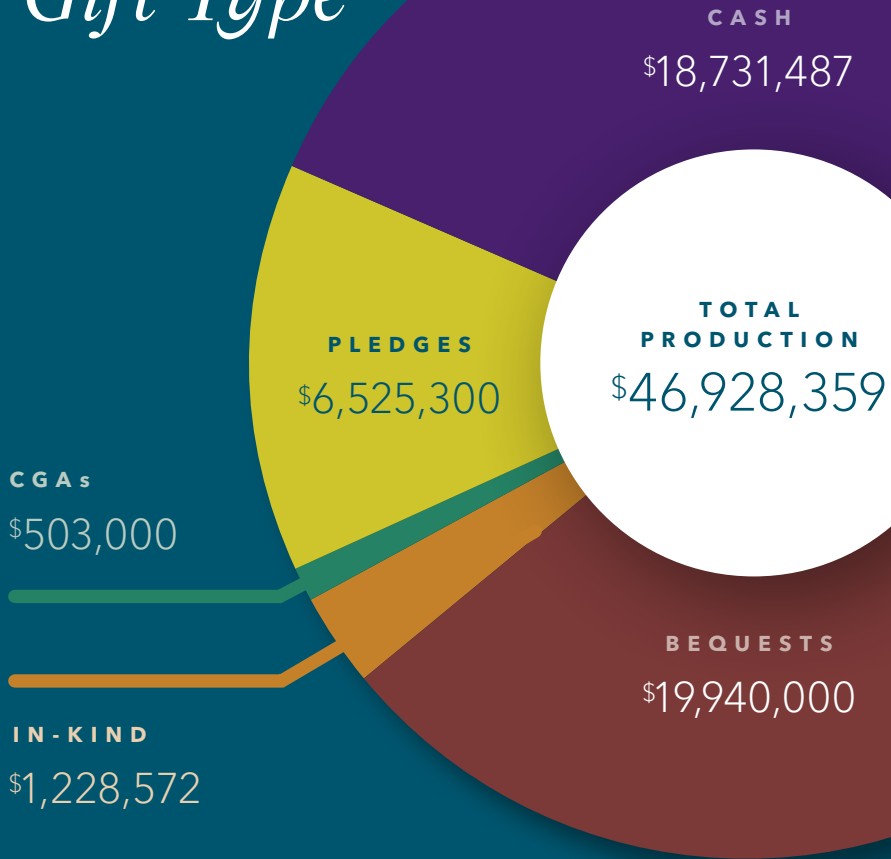
Total in investment accounts at year-end

\$342,780,168

Investment note: HonorHealth Foundation's investment portfolio is managed by Merrill Lynch under the direction of the Board of Trustees. The portfolio's objective is to achieve a total return sufficient, on average, to maintain the purchasing power of the Foundation and provide stability for the portfolio over time to support HonorHealth needs.

FUNDRAISING BY

Gift Type



Unrestricted gifts may be used immediately to meet HonorHealth needs.

Unrestricted balance
\$96,847,737

Restricted gifts are held in an investment account to be released to the HonorHealth department or program as designated by the donor.

Non-endowed balance
\$51,448,261

Endowed funds are held in an investment account, to grow via interest earned, for a future purpose. The Board of Trustees establishes the annual spend rate (from 3 to 5%). This investment income supports the donor's designated program.

Endowed balance
\$194,484,170

Distributions to HonorHealth

CAPITAL

\$8,964,397



PROGRAMMATIC

\$9,670,474

Financial Report

TOTAL REVENUE	\$18,111,500
PROGRAM EXPENSES	\$18,634,871
HONORHEALTH SUPPORT*	\$12,000,000
Administrative Expense	\$4,631,039
Fundraising Expenses	\$6,421,063
TOTAL EXPENSES	\$11,052,102
ENDING NET ASSETS	\$344,196,056

Audit Statement

The Foundation audit for 2024 was consolidated with the HonorHealth audit and was completed with no management letter comments.

For a link to the Foundation's most recent IRS Form 990, please visit our website at honorhealthfoundation.org/about/financial-transparency/ or scan the code below.



* HonorHealth funds all staff and operating expenses, so 100 percent of every donation is directed to the donor's stated purpose. No donor funds were used to produce this report.

FINANCIALS

Your generosity at work

Here are just a few examples of the difference you made as the Foundation released donations to HonorHealth in 2024

Desert Mission Adult Day Health Care virtual reality system	\$10,000
Bladder Scanner workstation at Deer Valley	\$12,000
Resident surgery program	\$25,000
Updated monitors for NICU patients	\$26,000
Bone density scanner	\$30,000
Annual Nursing Seminar	\$35,000
Blue Zones programming	\$41,766
Labor & Delivery childbirth and ultrasound simulators for realistic advanced clinical training	\$52,000
Employee Crisis Assistance	\$54,000
Research Institute Rare Cancer Initiative	\$55,805
Neuroscience social worker	\$65,000
K-9 Security team supplies and veterinary care	\$67,000
Gas marbles - testing drug delivery through the blood via stable "bubbles"	\$120,000
Military Partnership training kits	\$189,000
5 Transesophageal Endocardiography ultrasound probes	\$191,078
Patient assistance	\$284,000
Surgical robot navigation technology at Scottsdale Osborn	\$400,000
Heart Center construction	\$1,325,776



**A MESSAGE FROM
TODD LAPORTE, CEO
HONORHEALTH**

Healthcare's hard reality is that today's slim margins and dynamic regulatory environment leave very little room for the expansion and innovation that is necessary for us to serve our growing community with the excellence it deserves.

But your generosity has touched the lives of thousands of patients and families, as well as our own team members. Your support of HonorHealth has made impact.

We have expanded our capabilities in Heart Care and brought them all together at a new cardiovascular center of excellence that just opened Phase 1. And we are improving community health through the Blue Zones Scottsdale Project with a goal to help people not only extend their lifespan but their healthspan – the years they live without limitations from chronic disease or injury.

Others are taking note of our success. HonorHealth was recently named the primary clinical affiliate for the new Arizona State University School of Medicine and Advanced Medical Engineering. This helps us attract new physician talent and drive advances in care diagnosis, treatment and therapy.

Those are just a few examples; you'll find so much more throughout this annual impact report.

In these pages you'll learn how your philanthropy gives us the ability to make big leaps forward – the resources to be a healthcare system of experts known for quality, personalized care that gives people more time for the people and experiences they love.

We truly couldn't do it without you.

Thank you for your generosity,

Todd LaPorte
CEO, HonorHealth



We are living in an extraordinary era of medical innovation, where groundbreaking advancements are redefining what is possible in healthcare.

Regenerative medicine
Futuristic technologies
Medical devices
Super-nutrition

What seemed like science fiction just a few years ago is now transforming lives right here in our community!

At HonorHealth, innovation and disruption are converging to push us beyond traditional healthcare, enabling us to deliver whole-person well-being and a longer, healthier life.



BOB BOVÉ
NEUROSCIENCE INSTITUTE

Finding a cure for Alzheimer's

After Megan Seoane lost her beloved mother to Alzheimer's, she felt compelled to help others facing this unforgiving and devastating disease.

Through their "Croquet for a Cure" garden party, which has grown every year, the Seoane family is supporting a new multidisciplinary clinic for cognitive care. This clinic, serving patients with Alzheimer's and other memory disorders, will open later this year at the Bob Bové Neuroscience Institute at HonorHealth.

Through the generosity of the Seoanes and their friends, HonorHealth is providing compassionate care that allows patients and families to navigate memory-related conditions with dignity and hope. And in collaboration with HonorHealth Research Institute, we are getting closer to new treatments and perhaps a cure.

INNOVATIONS IN CARE

CDW joins with HonorHealth to open Transformation Center

Thanks to a generous gift to the Foundation from CDW Healthcare Solutions, the HonorHealth/CDW Transformation Center opened last year as a shared space to test new healthcare technologies.

The center's purpose is to try out a wide variety of solutions to healthcare challenges, keeping only the ones with the greatest potential, then move through a progression of increased testing and evaluation in a simulation environment.

This rigorous testing enables the technology and operations teams to make better decisions before an innovation is purchased and installed, thus impacting real patient care and the day-to-day work of healthcare providers.

Innovations validated here have the potential to transform healthcare delivery worldwide!





From left to right:
Jared Langkilde,
Todd LaPorte, Craig
Johnson and David
Price break ground
on the new Peoria
Medical Campus.

EXPANDING OUR FOOTPRINT

HonorHealth Peoria Medical Campus

HonorHealth is expanding its world-class medical services to the Northwest Valley. The new HonorHealth Peoria Medical Campus will bring experts from multiple specialties together under one roof, creating a one-stop shop for cancer care and more.

Designed to make access to high-quality care easier and more seamless than ever, the new 95,000 square foot campus has just opened on the east side of Loop 101, south of Bell Road in Peoria.

DONOR SPOTLIGHT

My motivation to contribute to HonorHealth stems from my parents' philanthropic involvement. My mother was a cancer survivor, and I supported their idea of participating in the establishment of Tina's Treasures, a boutique especially for women fighting cancer at the Virginia G. Piper Cancer Center at the Shea campus.

Over the years, I have observed how Tina's Treasures has aligned with my mother's vision and contributed to HonorHealth's mission. So, upon learning about the creation of the cancer center in the West valley, I expressed interest in helping establish support services for patients and their family members at that location.

HonorHealth's focus on community and accessible healthcare underscores its commitment to improving lives. I am most grateful to be able to support HonorHealth's efforts in enhancing the care, well-being and support for patients and their families.

—Craig Johnson
Second-generation
HonorHealth donor with
Dr. Brenda Moorthy,
breast cancer surgeon,
HonorHealth.





"HonorHealth's model for AI revolves around the belief that humans are always responsible for delivering patient care. Artificial Intelligence will be used to support the expertise of doctors and nurses. It will allow us to collect more and more critical information from our patients while offering more time to provide the personalized care they expect and deserve."

—James Whitfill, MD
SVP, Chief Transformation Officer

ON THE HORIZON

Innovation endowment

This endowment is vital to the future of HonorHealth as it provides the resources to advance innovative healthcare technologies or practices that improve patient care.

Just a few examples under consideration now:

- **Ambient Voice Technology** to automate medical transcriptions, allowing physicians to focus on their patient, not their laptop
- **Large Language Model** software that scrutinizes millions of patient records and distills complex narratives into actionable insights for a personalized plan of care
- **Epic Cosmos** for de-identified data on 200+ million patients that can provide insights tailored to each unique patient
- **Room visualization technology** that collects vitals via Bluetooth, reducing the need to disturb patients
- **Artificial intelligence** that collects and processes data more quickly than any human



ADDRESSING THE DOCTOR SHORTAGE

Engineering the future of healthcare with Arizona State University

In 2024 HonorHealth entered into a transformative partnership under which HonorHealth will serve as the primary clinical affiliate for the new Arizona State University School of Medicine and Advanced Medical Engineering.

This academic affiliation accelerates our commitment to medical education and research. Our partnership includes the school of medicine, nursing education, preventive health, health information technology and research.

Together, we will cultivate the next generation of physicians who are committed to improving health outcomes for our community and our world.

"In a community healthcare system like HonorHealth, academic medicine defines a deeper purpose: blending the personalized, compassionate care of a local hospital with the groundbreaking discoveries and expertise of leading medical research."

—Todd LaPorte
CEO, HonorHealth

Stay connected

Stay connected with HonorHealth Foundation
through our newsletter, signature events and social media



Sign up for monthly news at
HonorHealthFoundation.org/subscribe

HONORHEALTH® Foundation

8125 North Hayden Road | Scottsdale, AZ 85258 | 480-587-5000 | HonorHealthFoundation.org